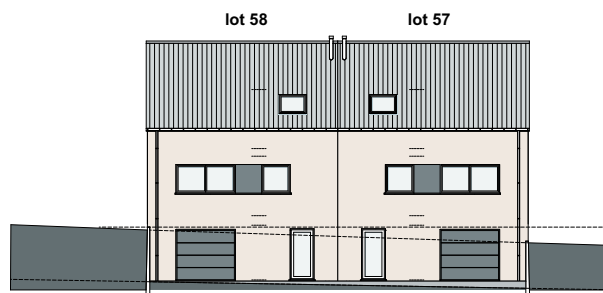
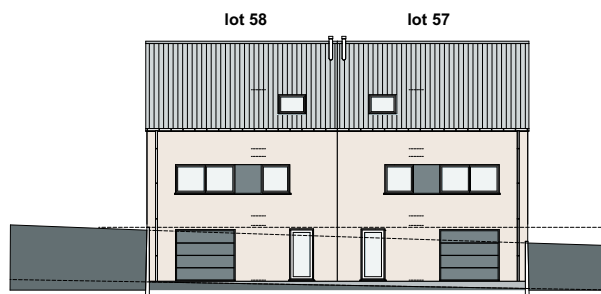
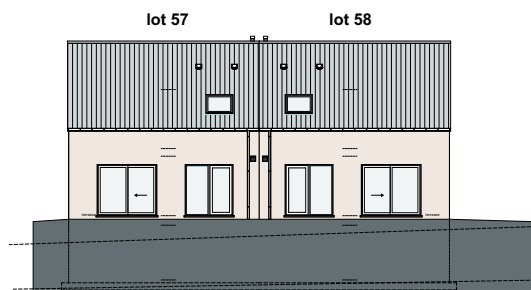


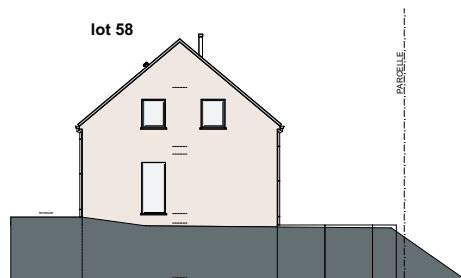
LOT 57 ET 58



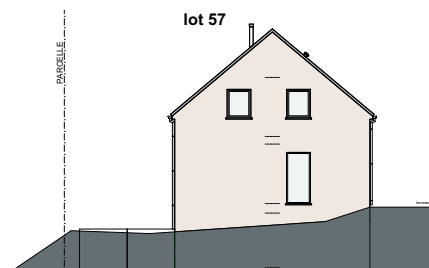
FAÇADE PRINCIPALE



FAÇADE ARRIÈRE



FAÇADE LATÉRALE



MATERIAUX:

Briques de parement:

Ton blanc

Toitures:

Toiture en tuiles de ton noir

Menuiserie des portes et

des fenêtres:

PVC, extérieure: de ton gris

intérieure: blanc

Menuiserie des corniches:

En bois tropique traité d'une

couche d'huile protectrice

Seuils:

En pierre bleue

Gouttières:

Zinc, rectangulaires

Porte de garage:

Sectionnelle en quatre

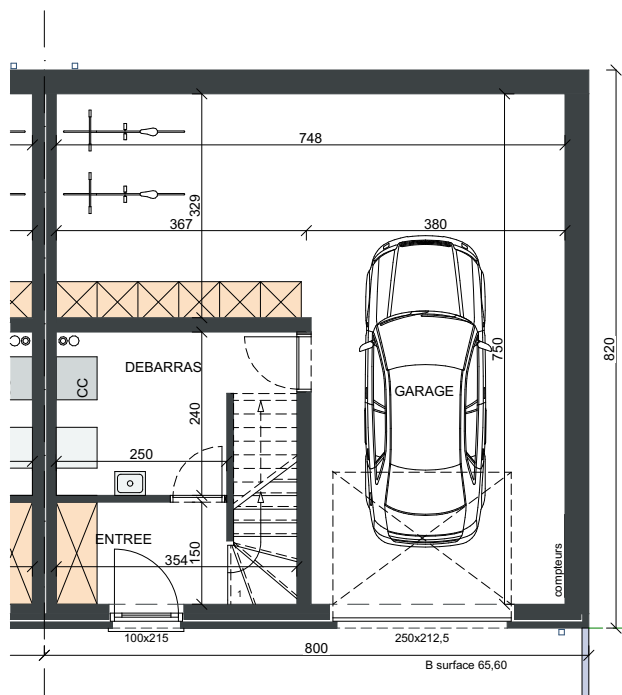
parties horizontales

SURFACE:

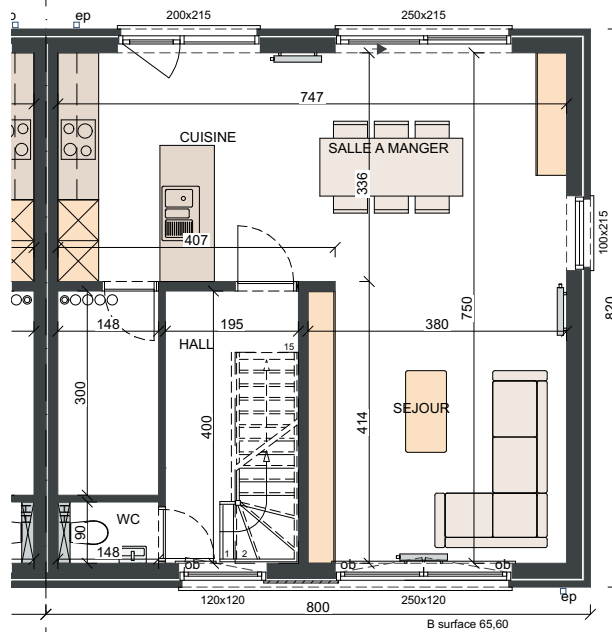
Lot 57: ±567m²

Lot 58: ±623m²

SOUS-SOL
SURF. 65,60 M²



REZ-DE-CHAUSSÉE
SURF. 65,60 M²



PREMIÈRE ÉTAGE

