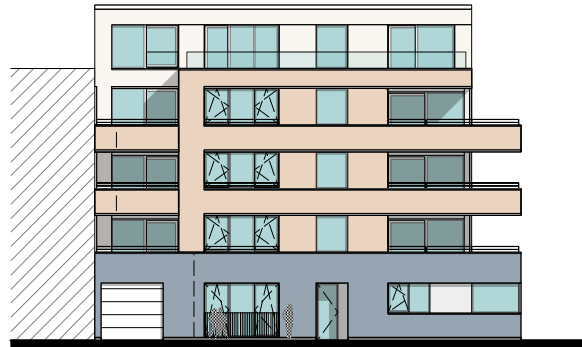
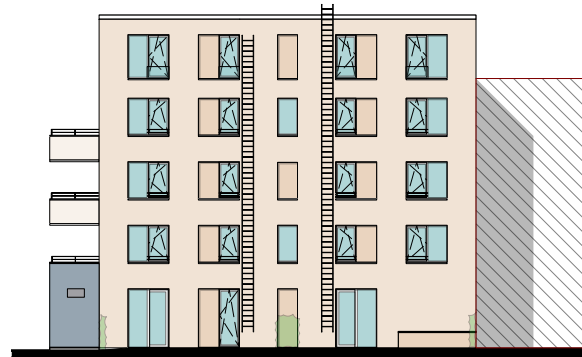


GEVELPLAN



VOORGEVEL



ACHTERGEVEL



RECHTERGEVEL

MATERIALEN:

Gevelsteen:

Zandkleur

Gevelsteen plint:

Blauw/ grijs

Buitenschrijnwerk:

Wit

Gevelplaat:

Wit

Dakrandprofielen:

Wit

Dorpels:

Natuursteen plint

Glazen balustrade:

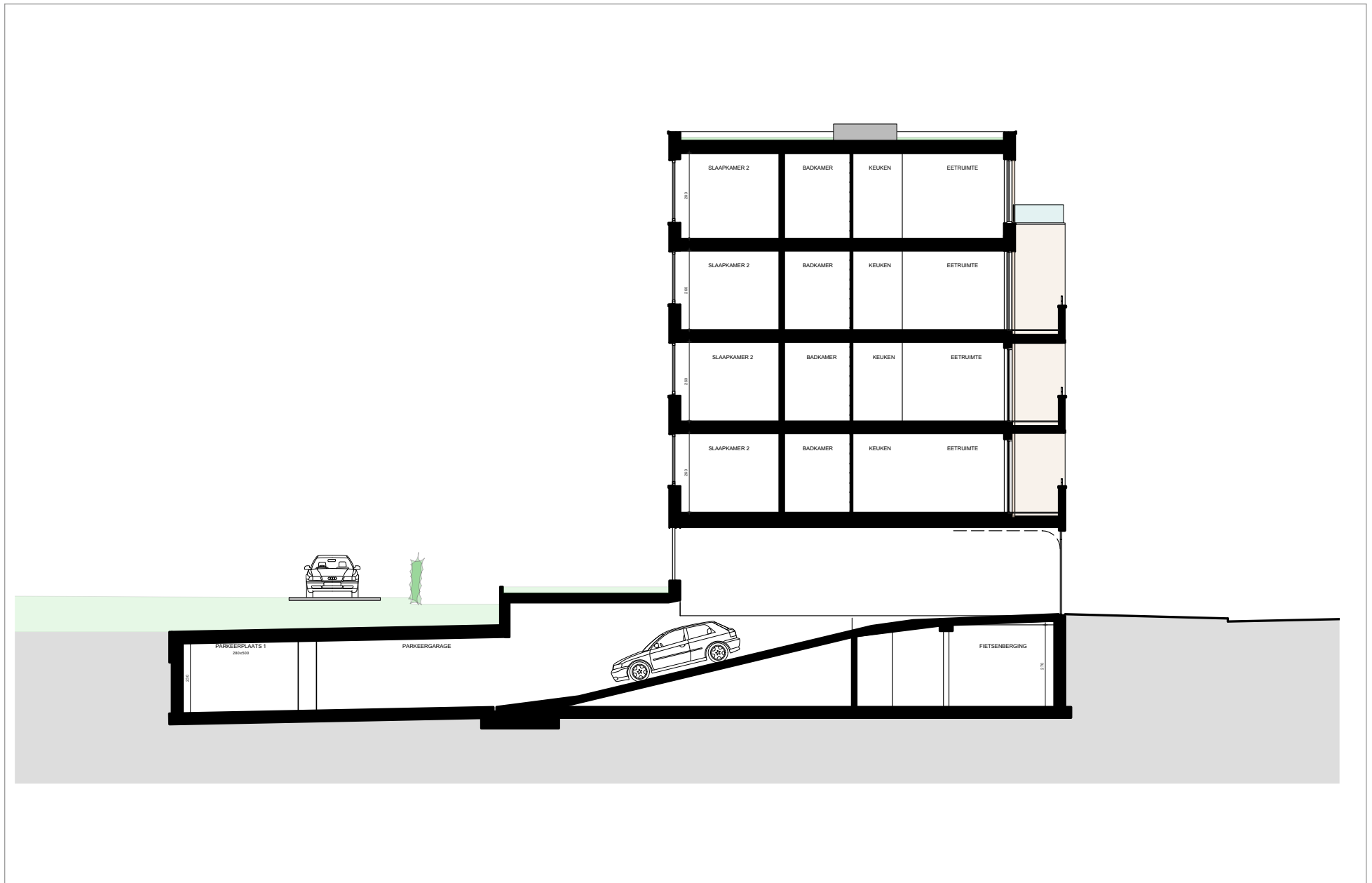
Klaar glas

Poort:

Wit

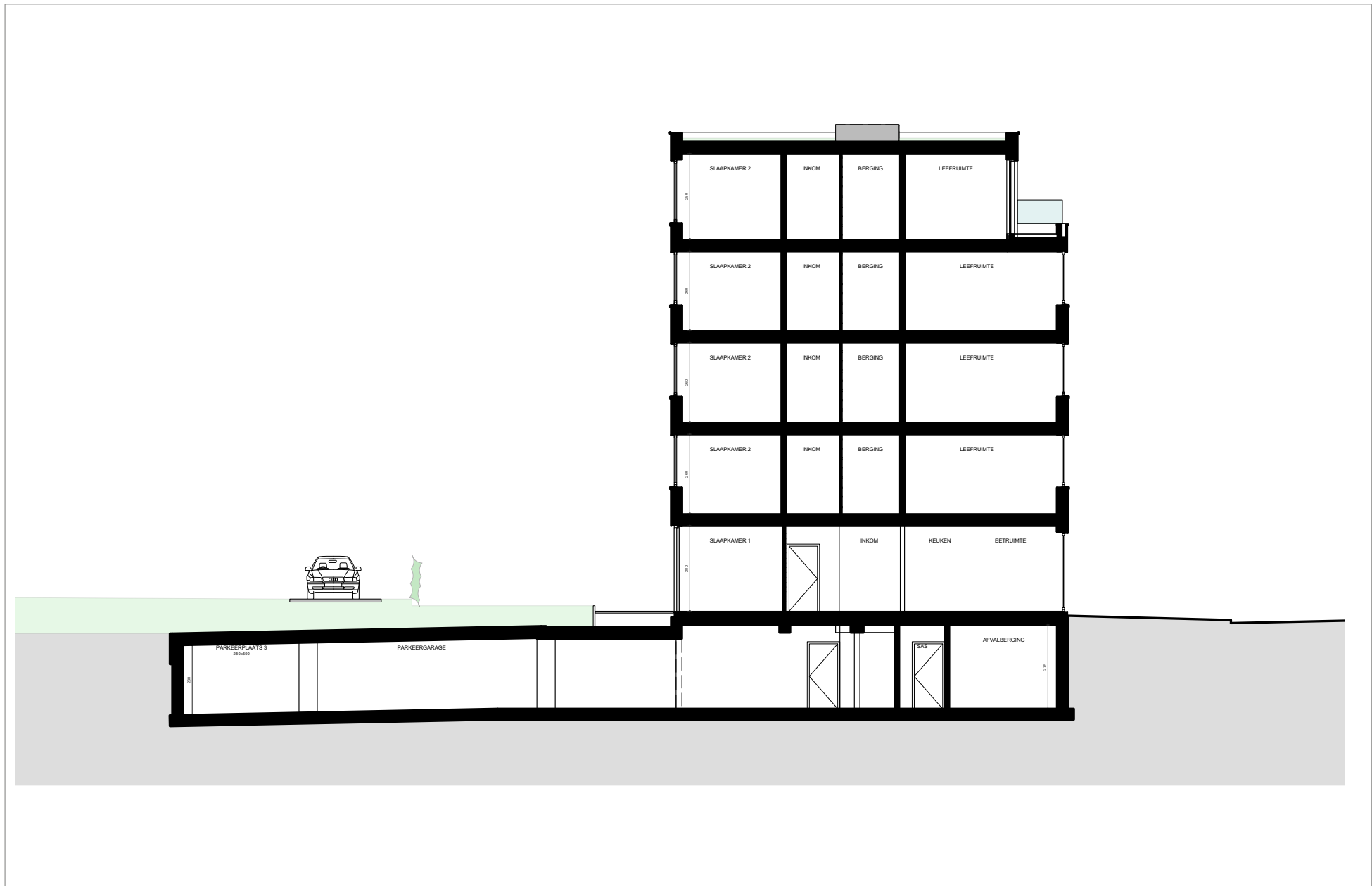
Gevelbekleding:

Hout

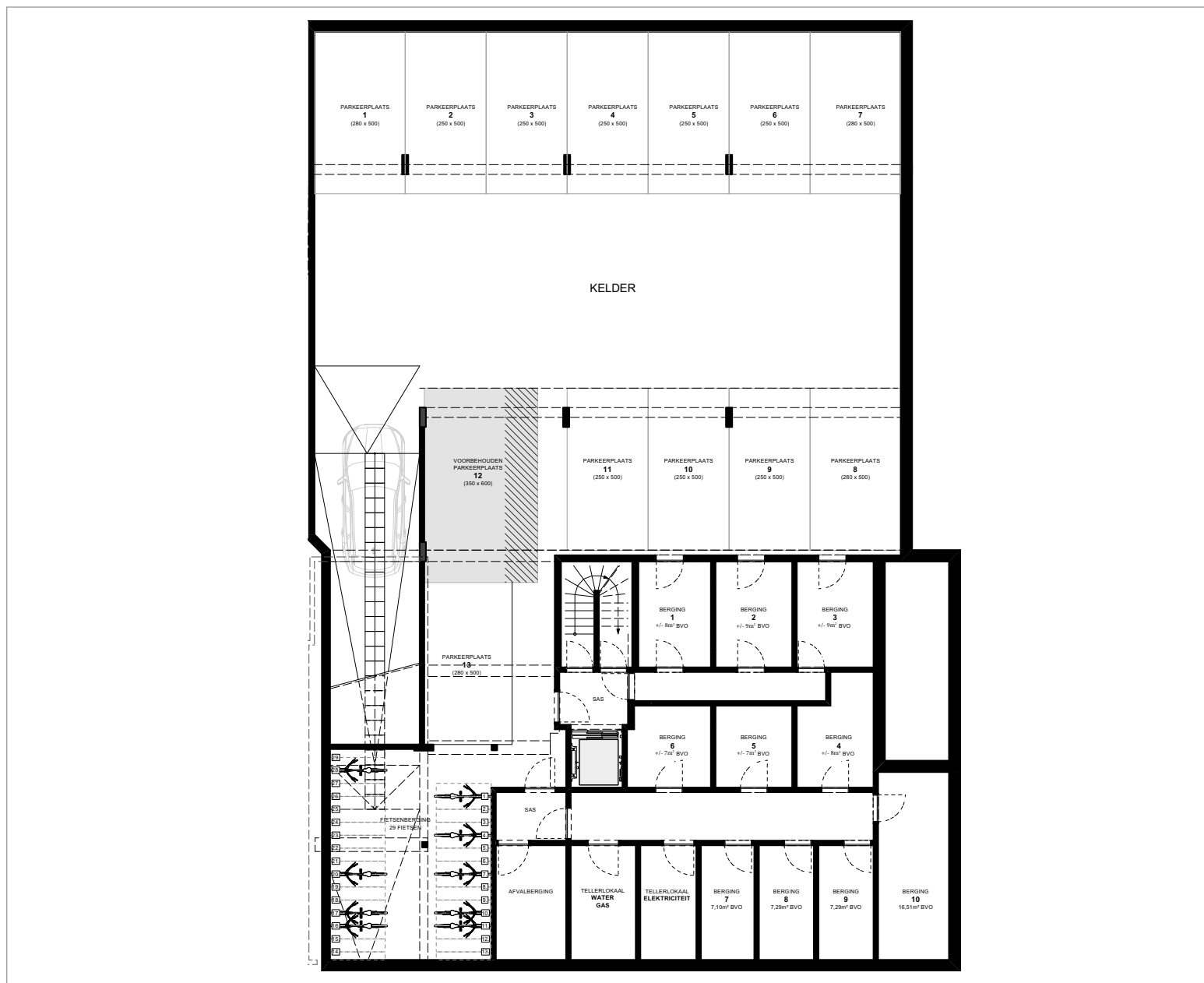


DOORSNEDE

Schaal 1/100



KELDER



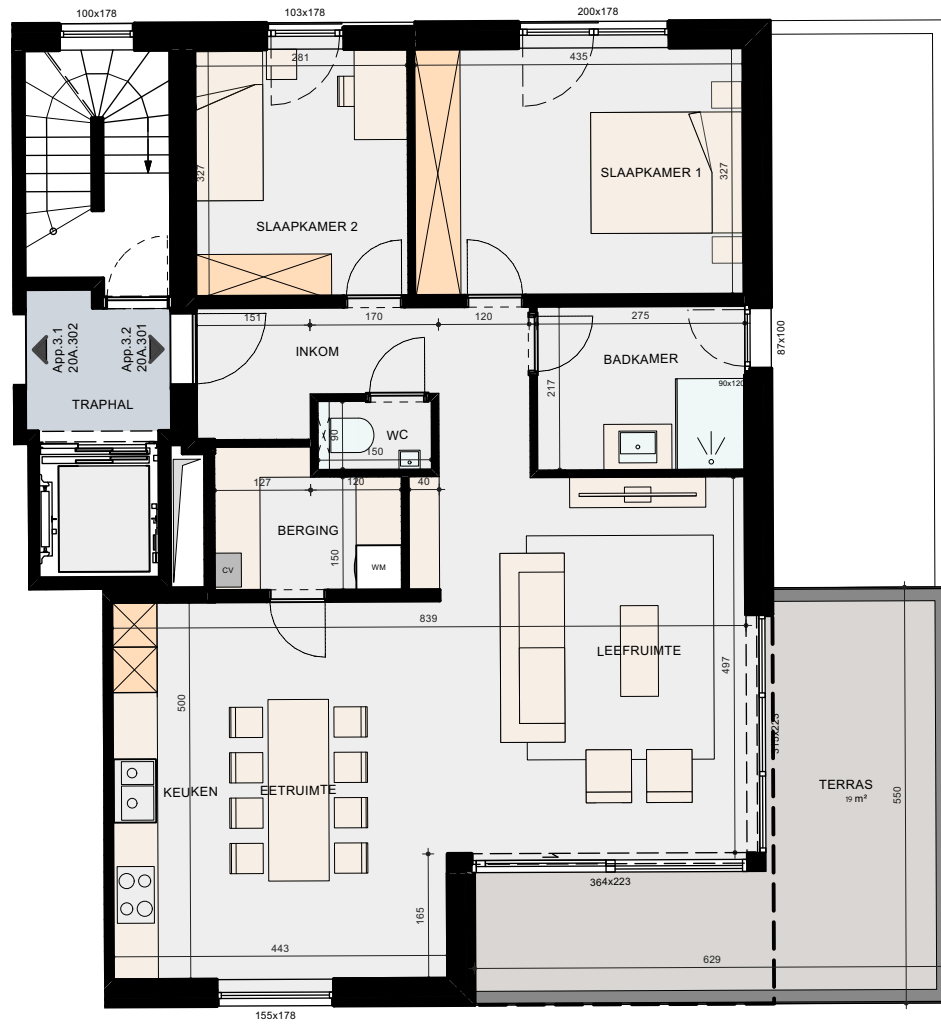
3^{DE} VERDIEPING APP. 3.1 EN 3.2



APP. 3.1: ± 102M²
 APP. 3.2: ± 100M²

Schaal 1/100

APP. 3.2



SLPK.: 2
OPP.: ± 100M²
OPP. TERRAS: ± 19M²

Schaal 1/100