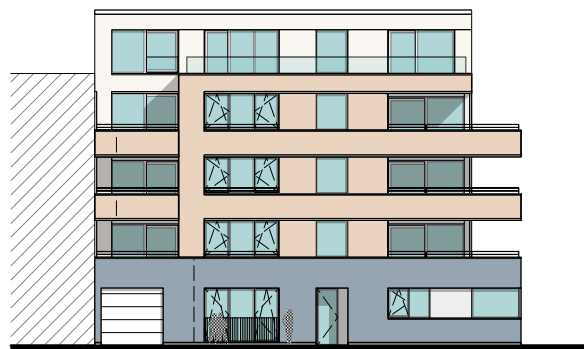
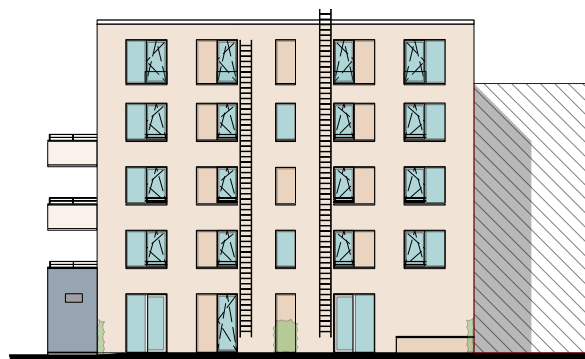


GEVELPLAN



VOORGEVEL



ACHTERGEVEL



RECHTERGEVEL

MATERIALEN:

Gevelsteen:

Zandkleur

Gevelsteen plint:

Blauw/ grijs

Buitenschrijnwerk:

Wit

Gevelplaat:

Wit

Dakrandprofielen:

Wit

Dorpels:

Natuursteen plint

Glazen balustrade:

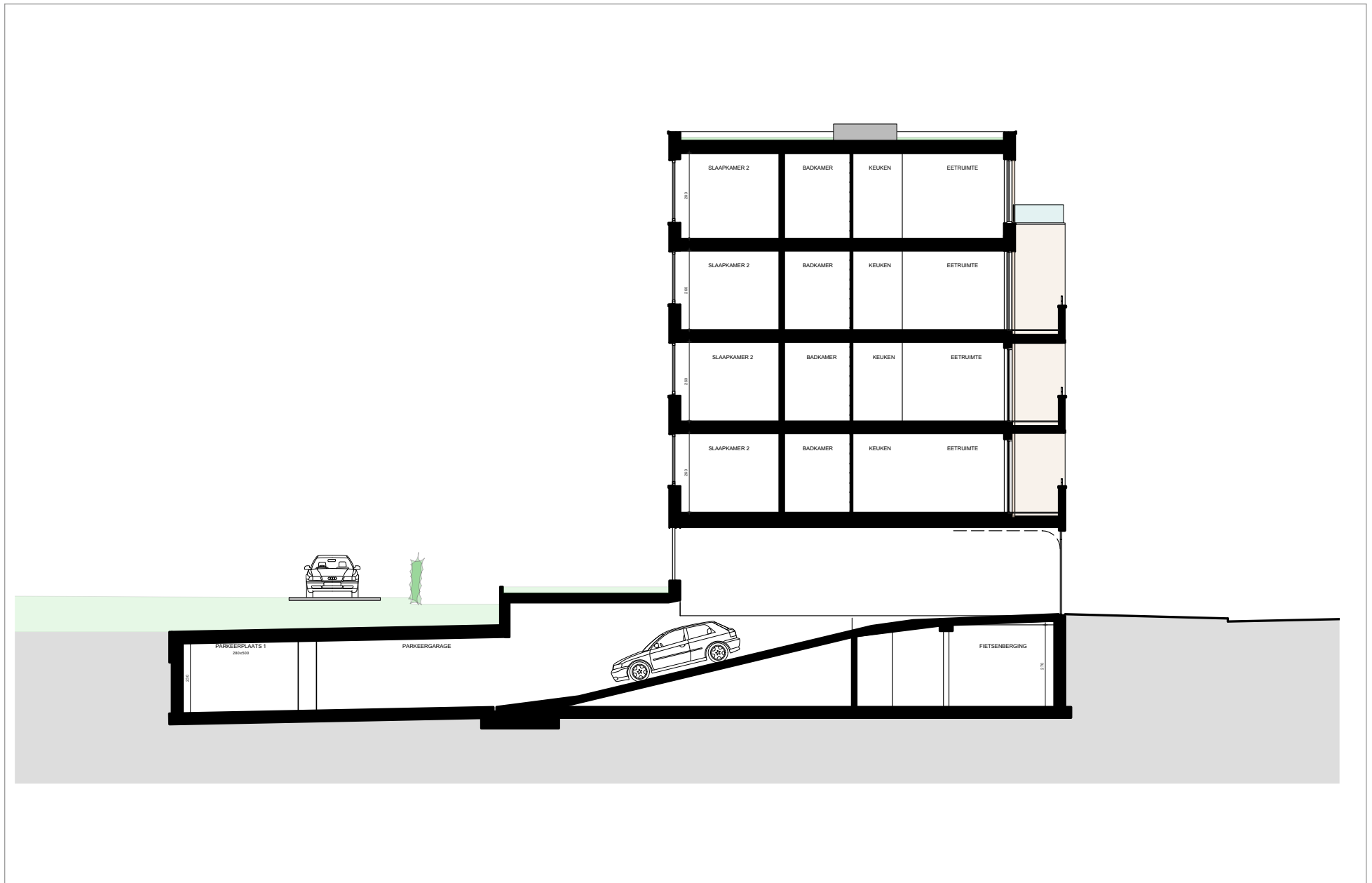
Klaar glas

Poort:

Wit

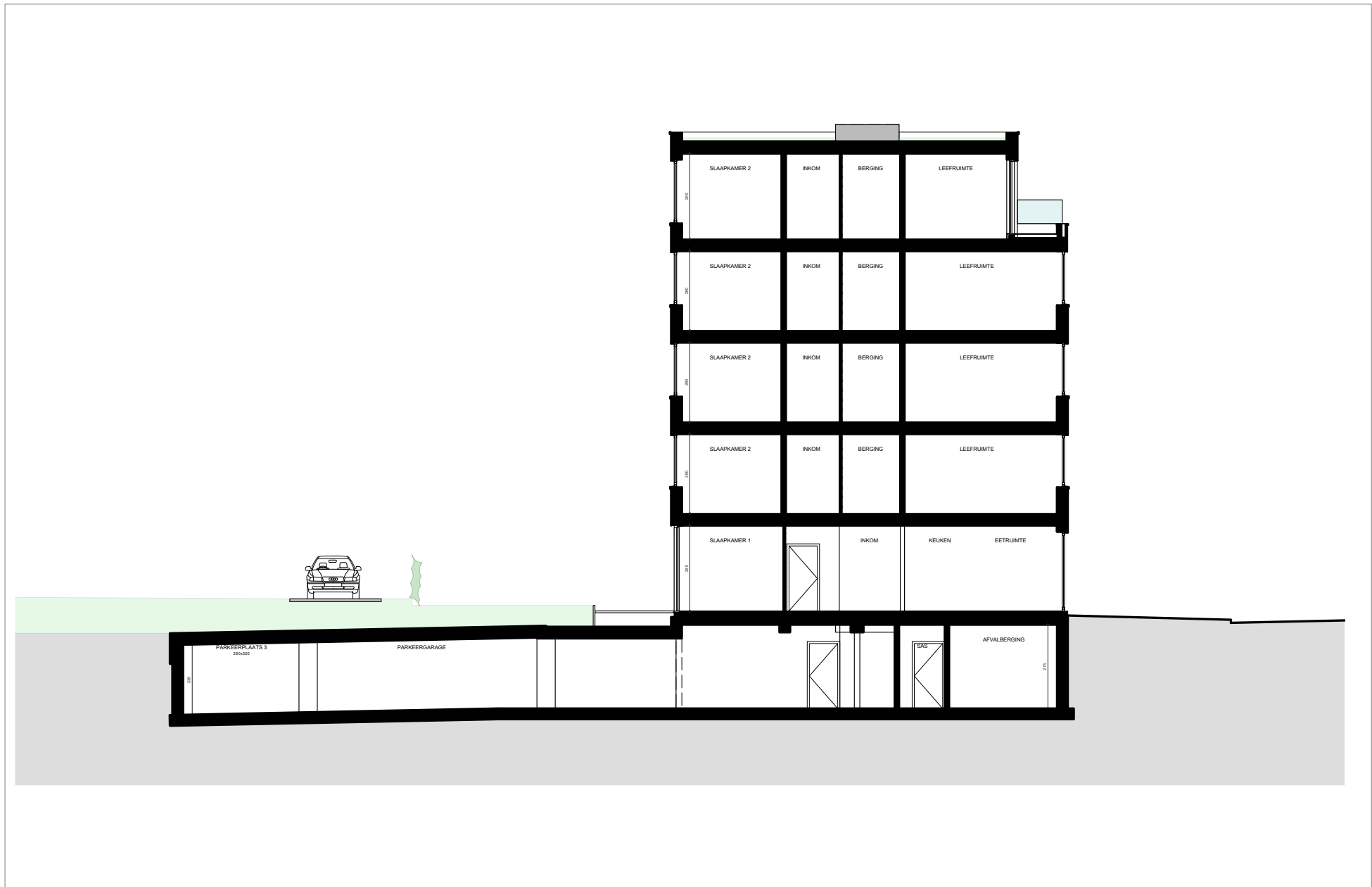
Gevelbekleding:

Hout

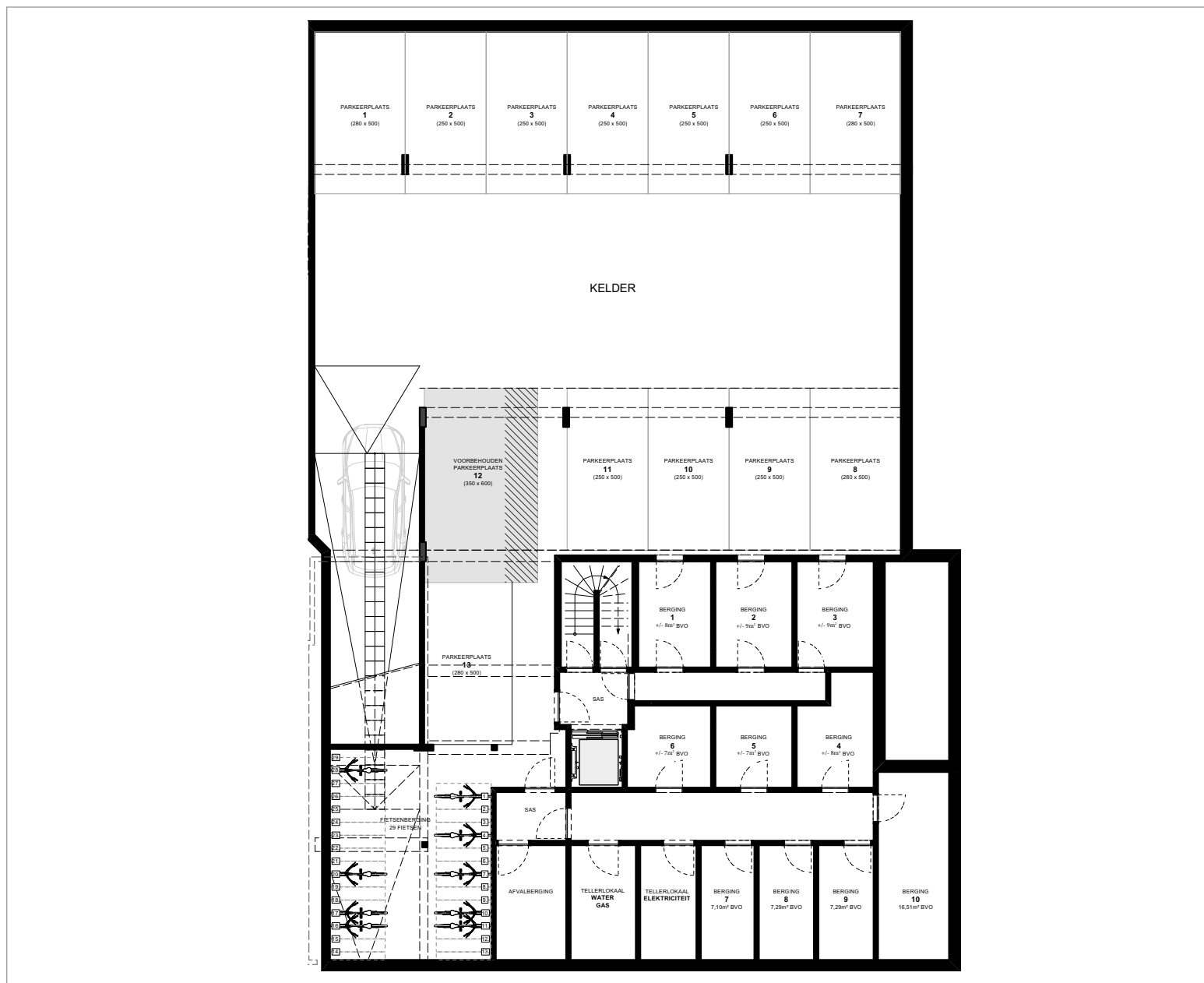


DOORSNEDE

Schaal 1/100



KELDER



3^{DE} VERDIEPING APP. 3.1 EN 3.2





SLPK.: 2

OPP.: ± 102M²

OPP. TERRAS: ± 7M²

Schaal 1/100

