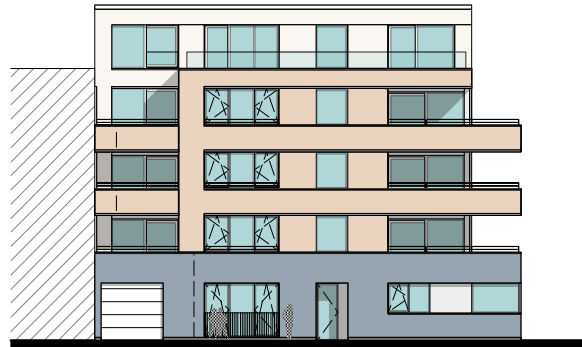
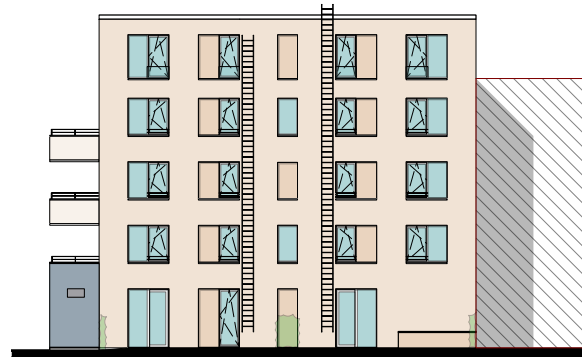


GEVELPLAN



VOORGEVEL



ACHTERGEVEL



RECHTERGEVEL

MATERIALEN:

Gevelsteen:

Zandkleur

Gevelsteen plint:

Blauw/ grijs

Buitenschrijnwerk:

Wit

Gevelplaat:

Wit

Dakrandprofielen:

Wit

Dorpels:

Natuursteen plint

Glazen balustrade:

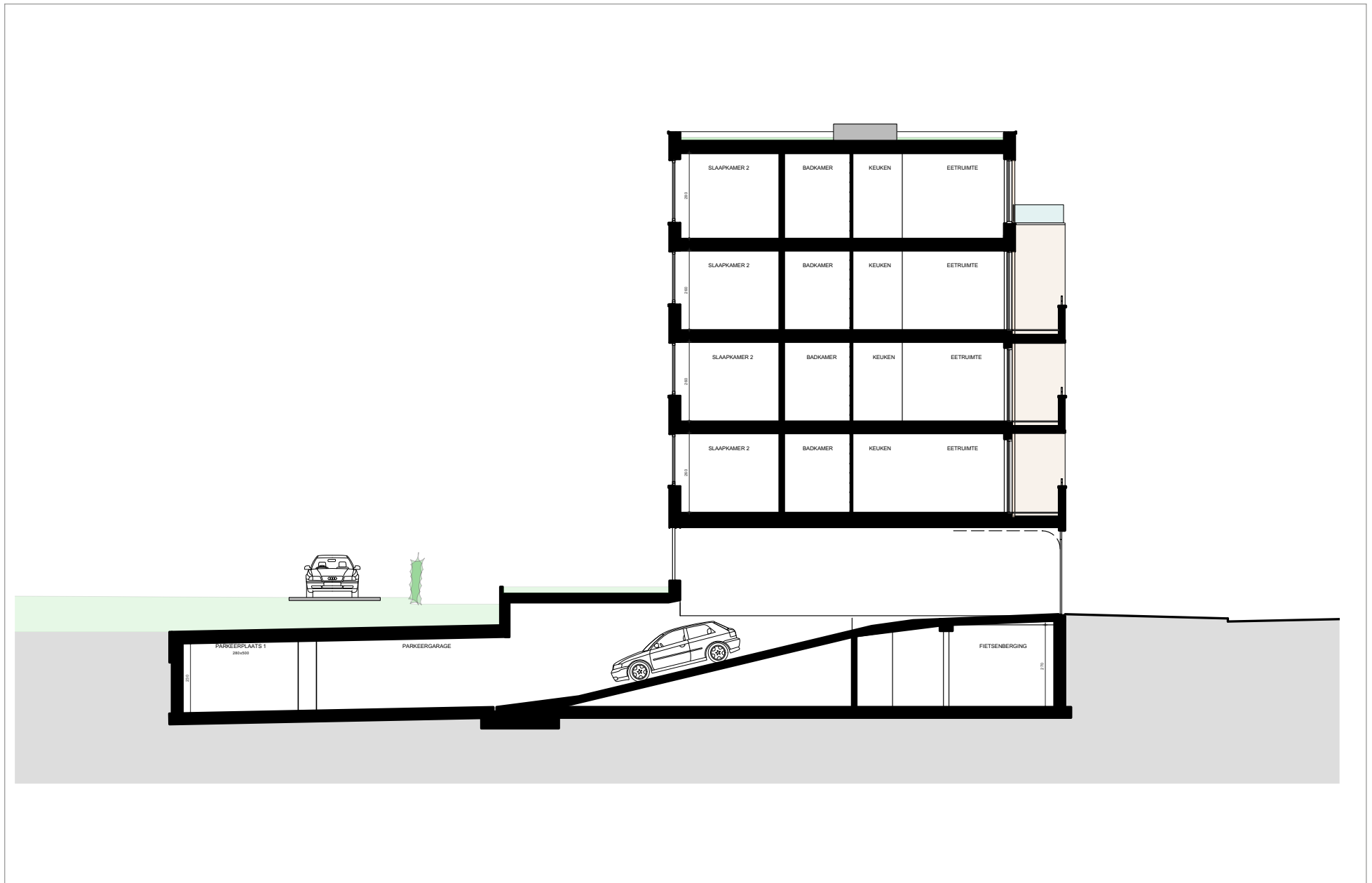
Klaar glas

Poort:

Wit

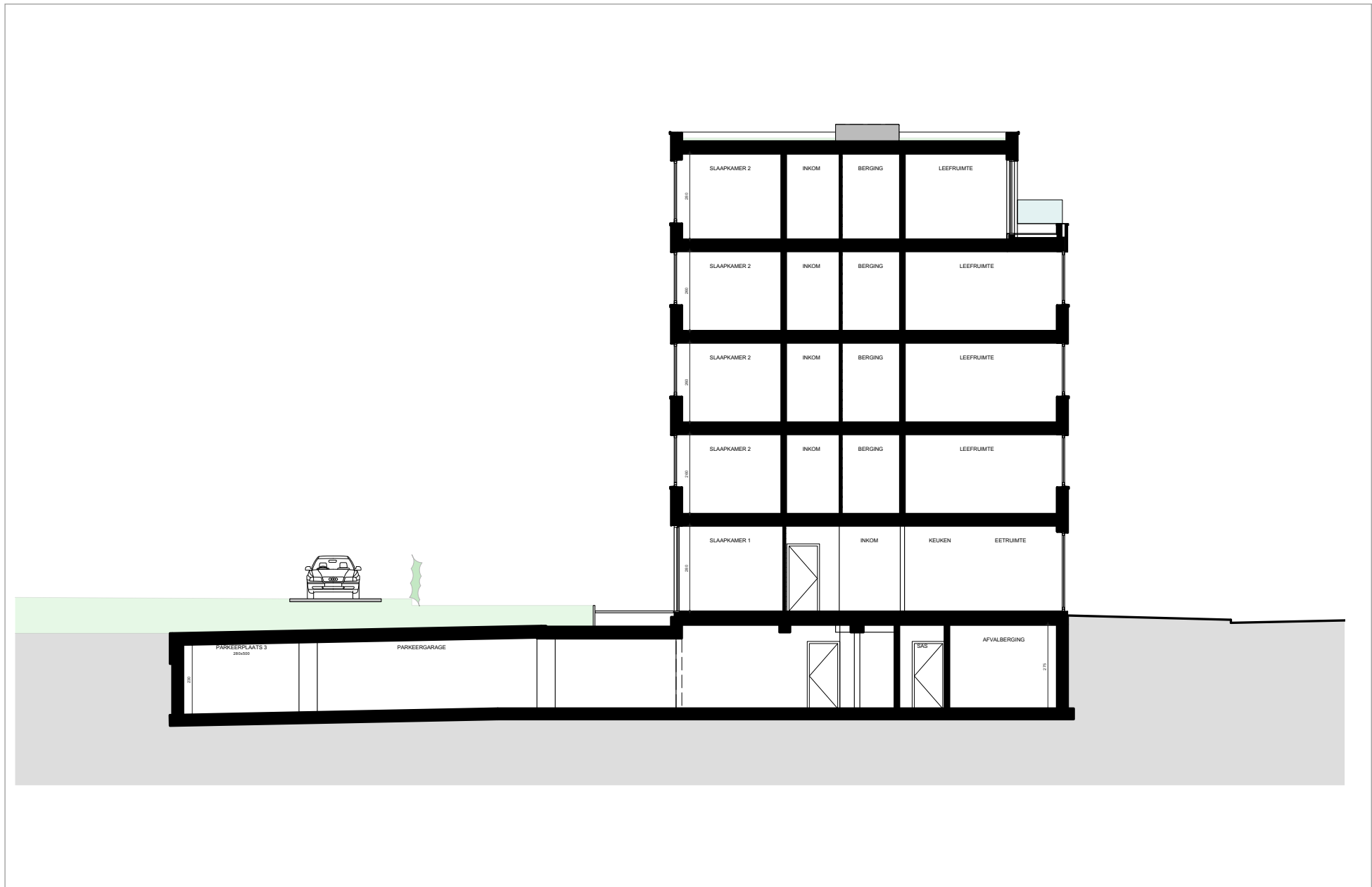
Gevelbekleding:

Hout

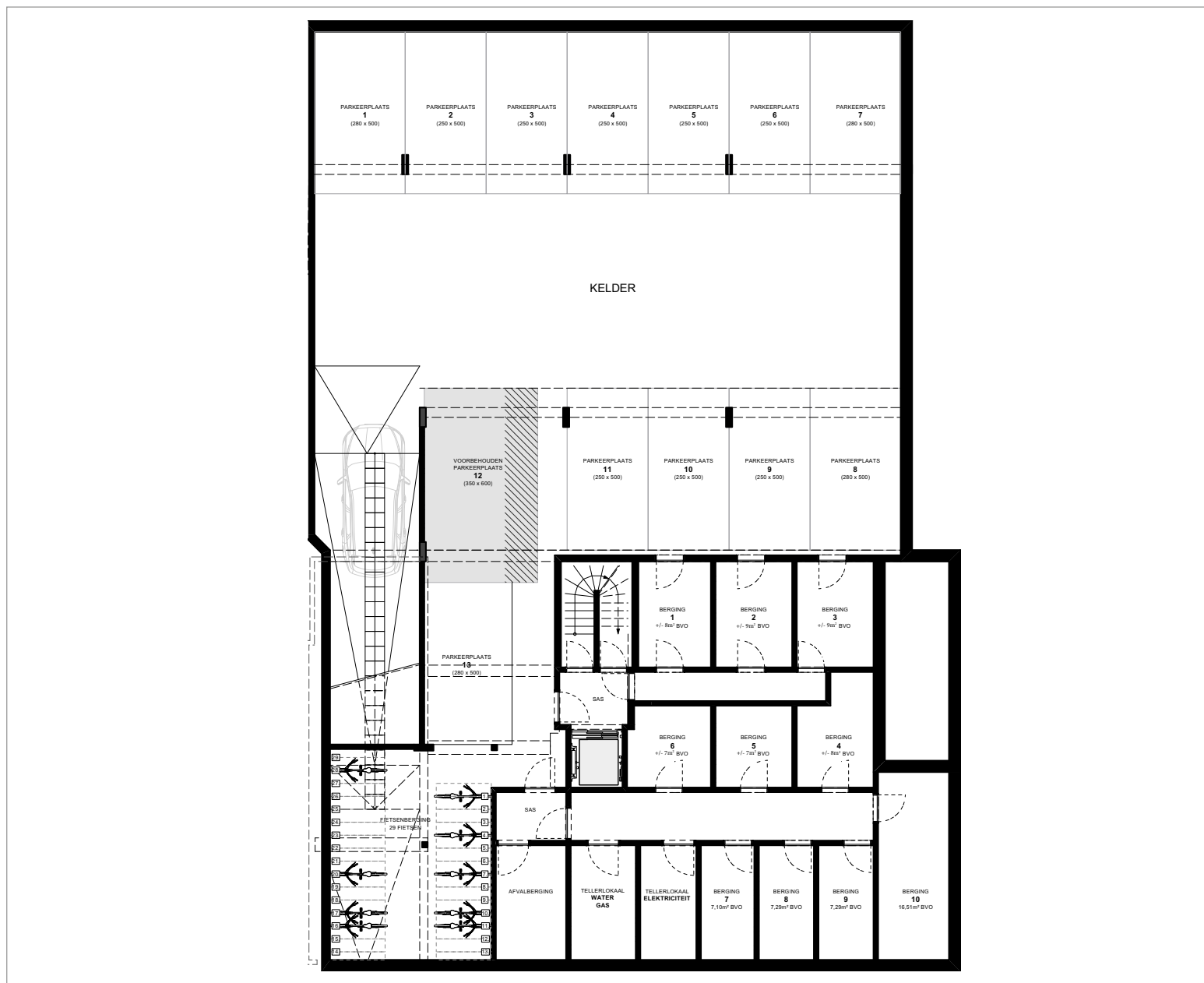


DOORSNEDE

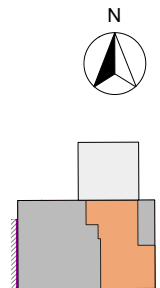
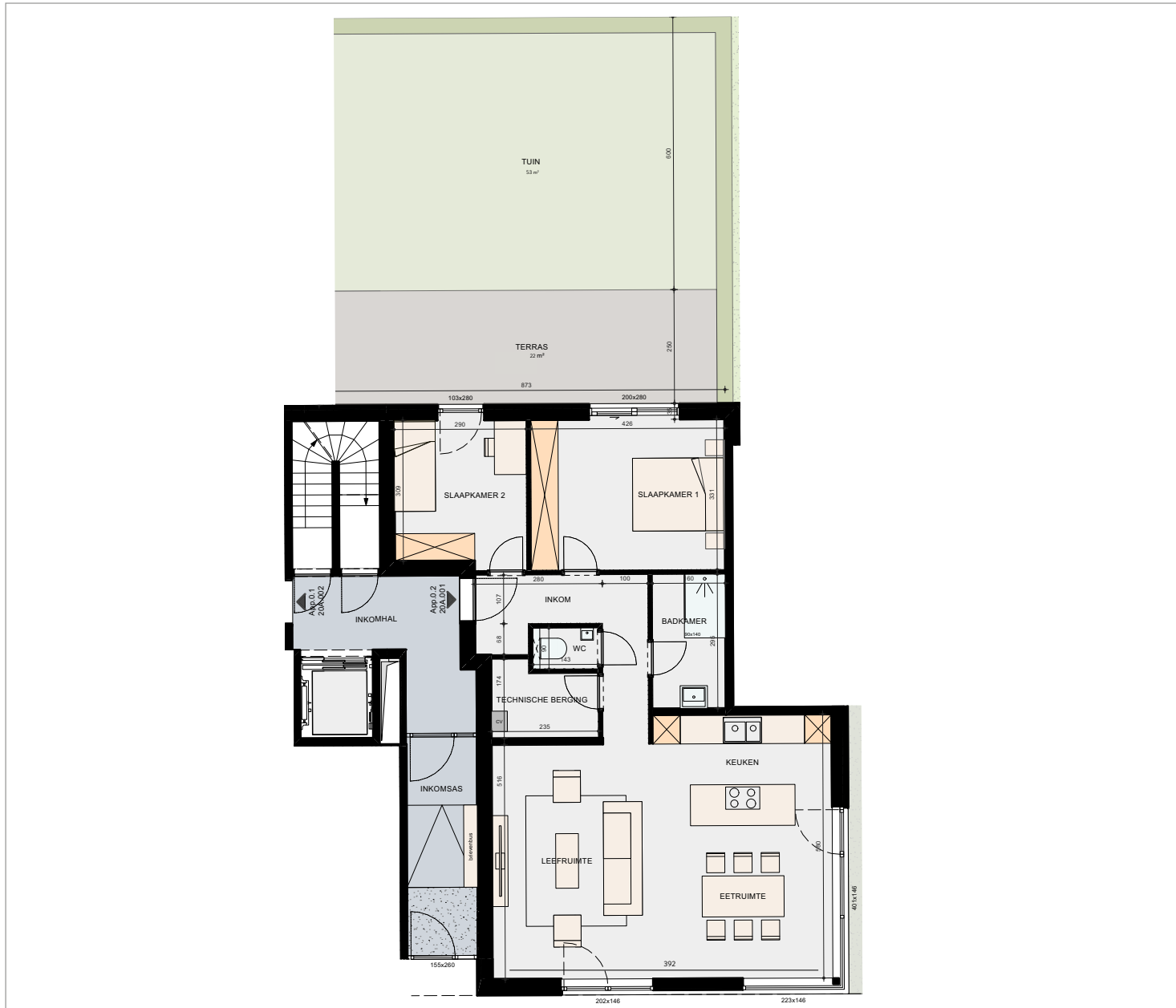
Schaal 1/100



KELDER



APP. 0.2



SLPK.: 2
 OPP.: ± 96M²
 OPP. TUIN: ± 53M²
 OPP. TERRAS: ± 22M²

Schaal 1/100