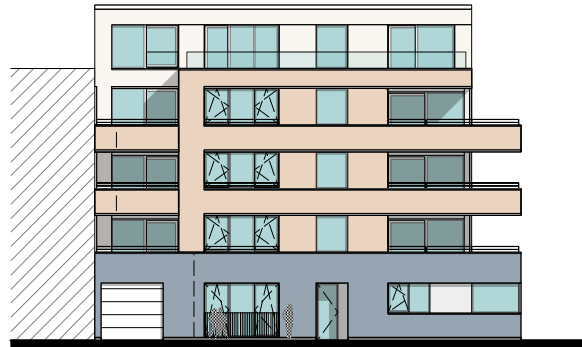
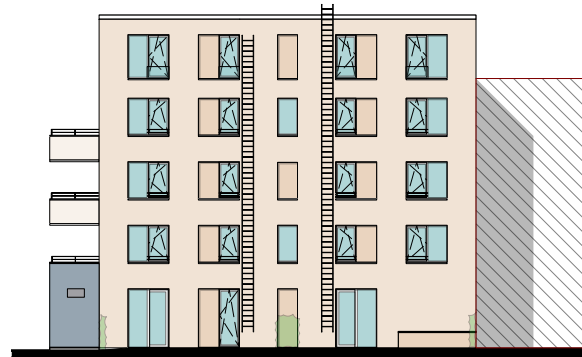


# GEVELPLAN



VOORGEVEL



ACHTERGEVEL



RECHTERGEVEL

## MATERIALEN:

### Gevelsteen:

Zandkleur

### Gevelsteen plint:

Blauw/ grijs

### Buitenschrijnwerk:

Wit

### Gevelplaat:

Wit

### Dakrandprofielen:

Wit

### Dorpels:

Natuursteen plint

### Glazen balustrade:

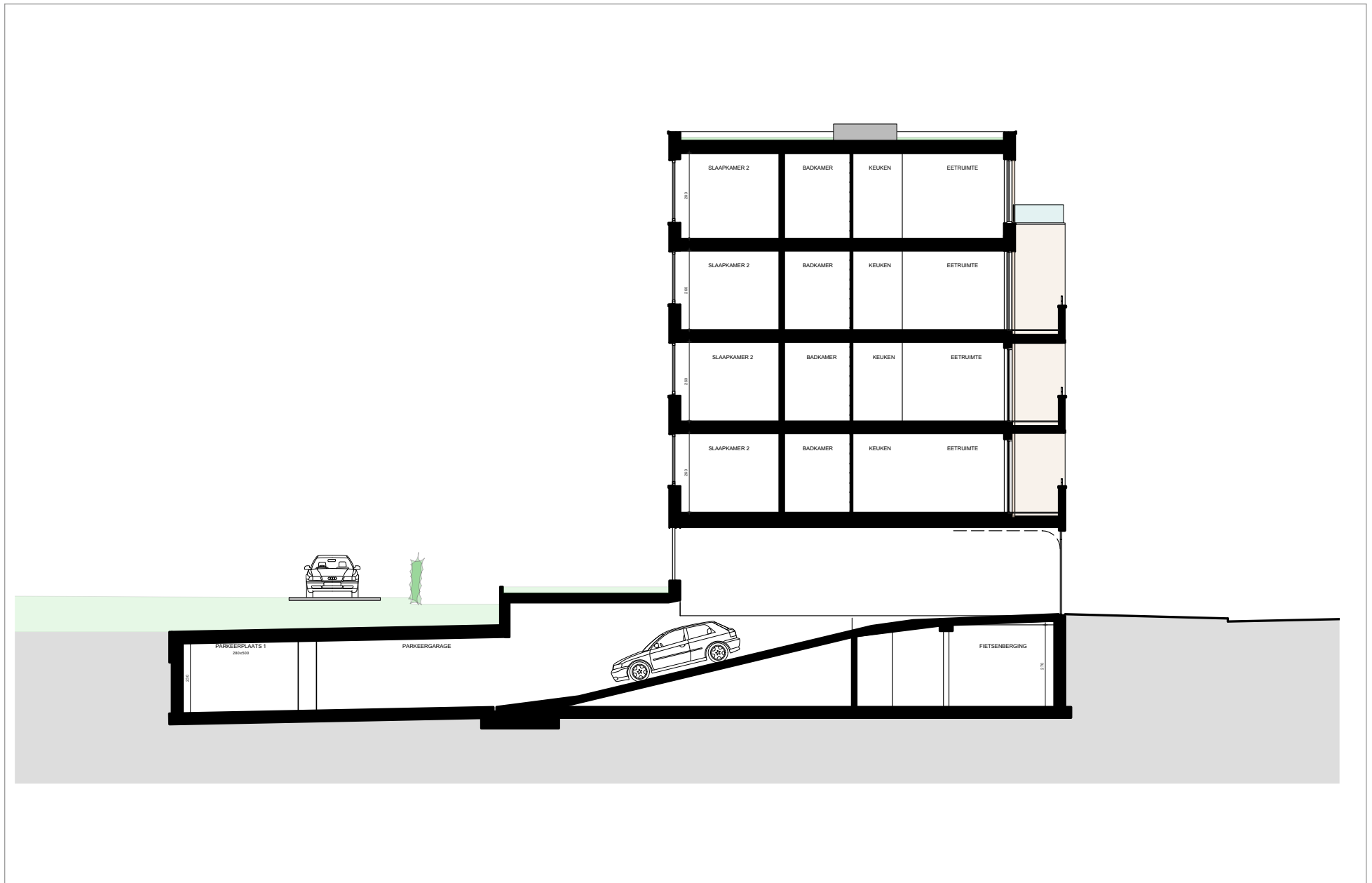
Klaar glas

### Poort:

Wit

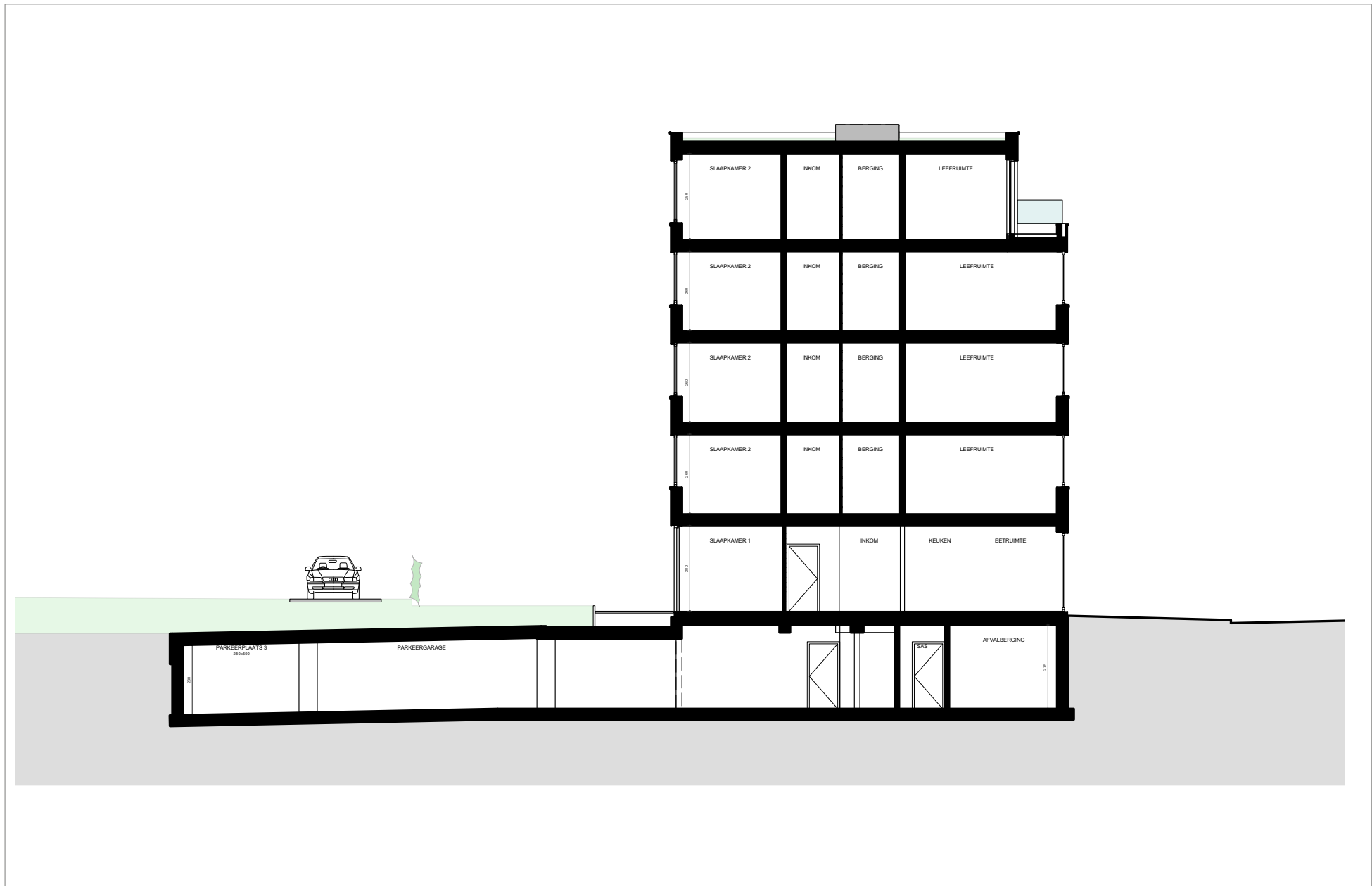
### Gevelbekleding:

Hout

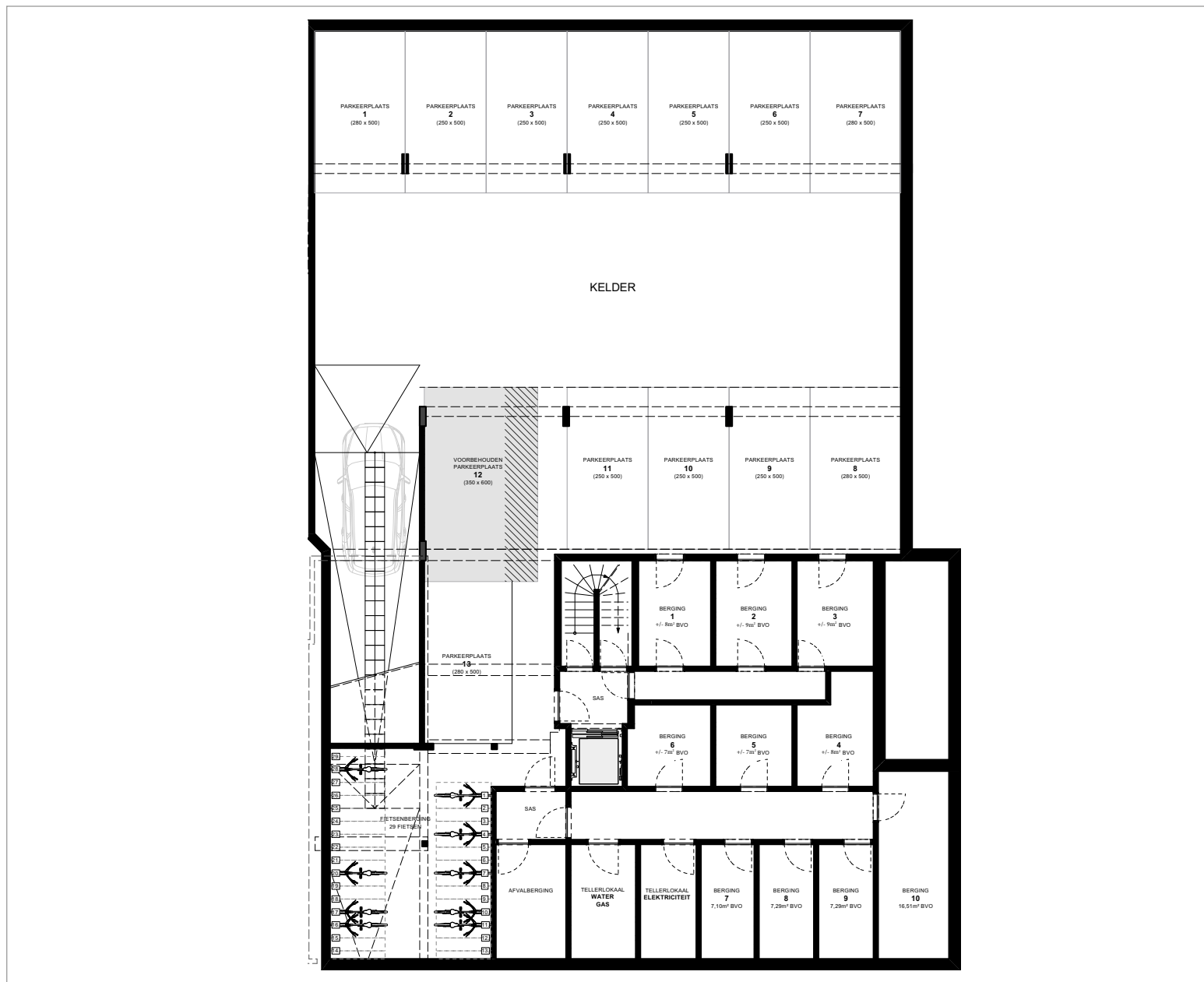


# DOORSNEDE

Schaal 1/100



# KELDER



# 1<sup>STE</sup> VERDIEPING APP. 1.1 EN 1.2



APP. 1.1: ± 102M<sup>2</sup>  
 APP. 1.2: ± 100M<sup>2</sup>

Schaal 1/100

# APP. 1.2



SLPK.: 2  
OPP.: ± 100M<sup>2</sup>  
OPP. TERRAS: ± 19M<sup>2</sup>

Schaal 1/100