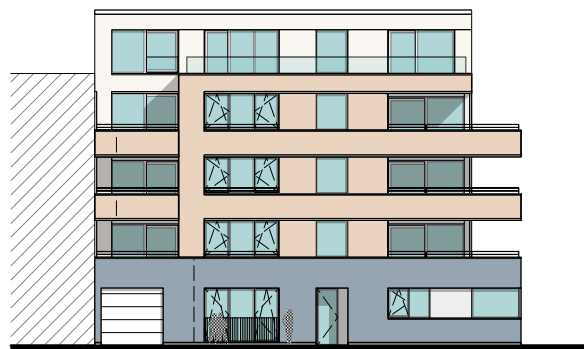
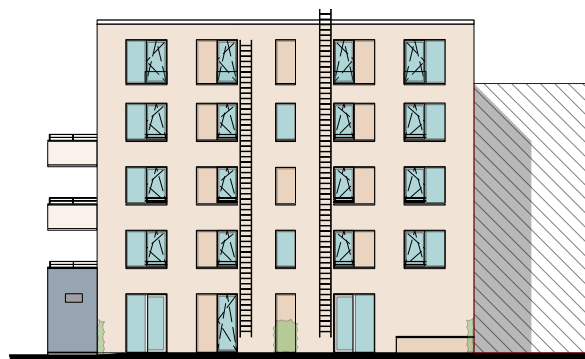


# GEVELPLAN



VOORGEVEL



ACHTERGEVEL



RECHTERGEVEL

## MATERIALEN:

### Gevelsteen:

Zandkleur

### Gevelsteen plint:

Blauw/ grijs

### Buitenschrijnwerk:

Wit

### Gevelplaat:

Wit

### Dakrandprofielen:

Wit

### Dorpels:

Natuursteen plint

### Glazen balustrade:

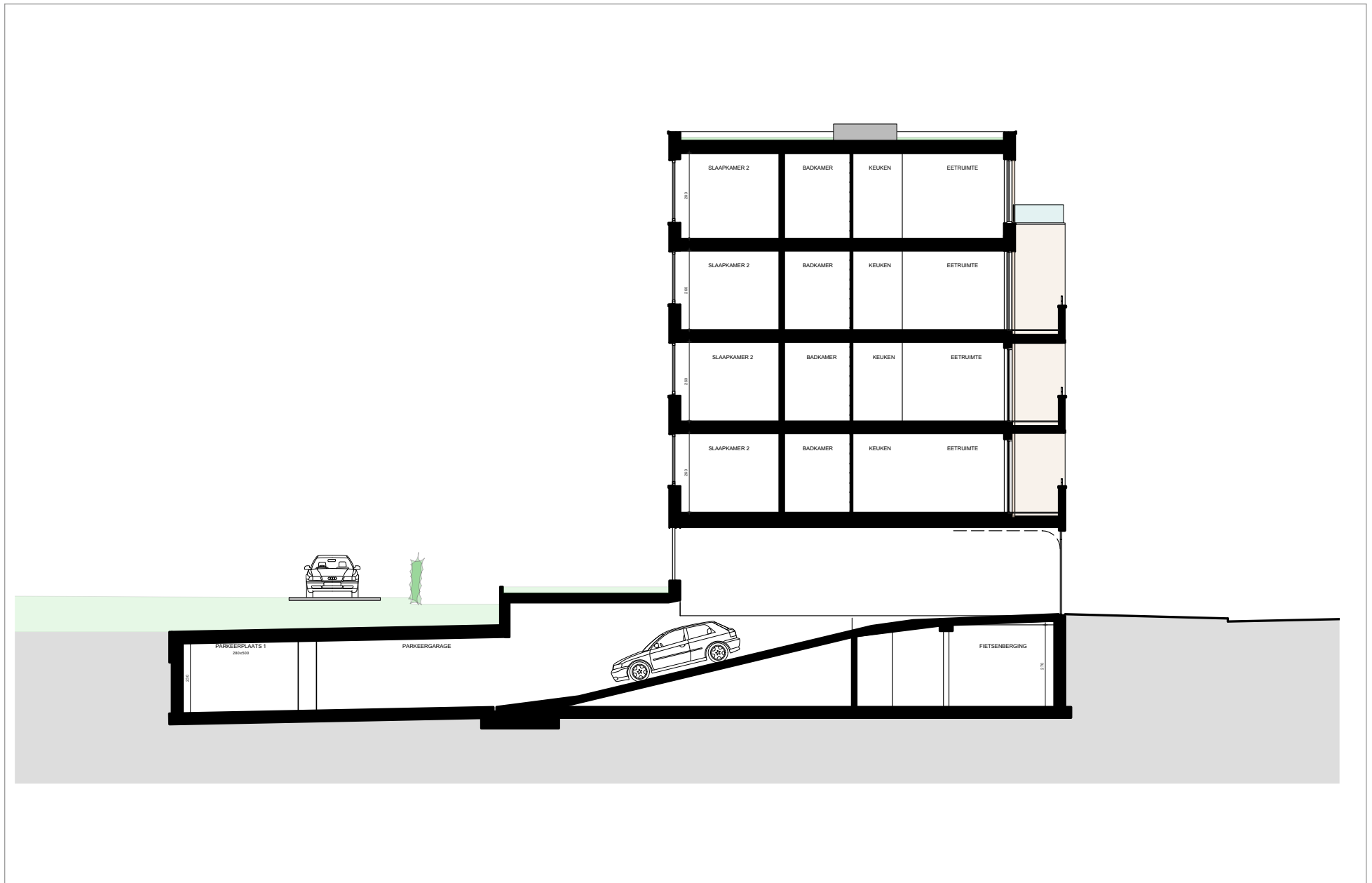
Klaar glas

### Poort:

Wit

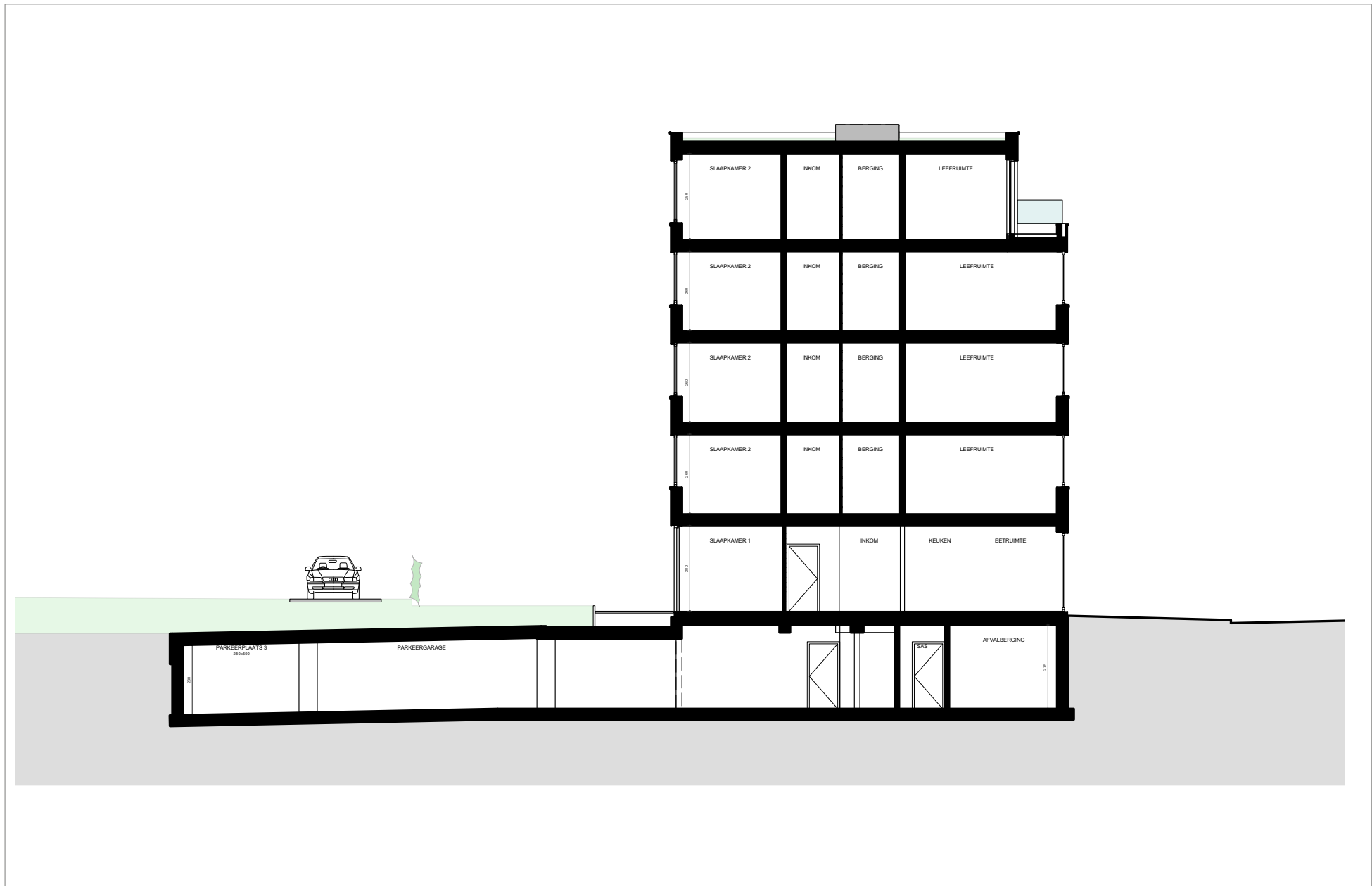
### Gevelbekleding:

Hout

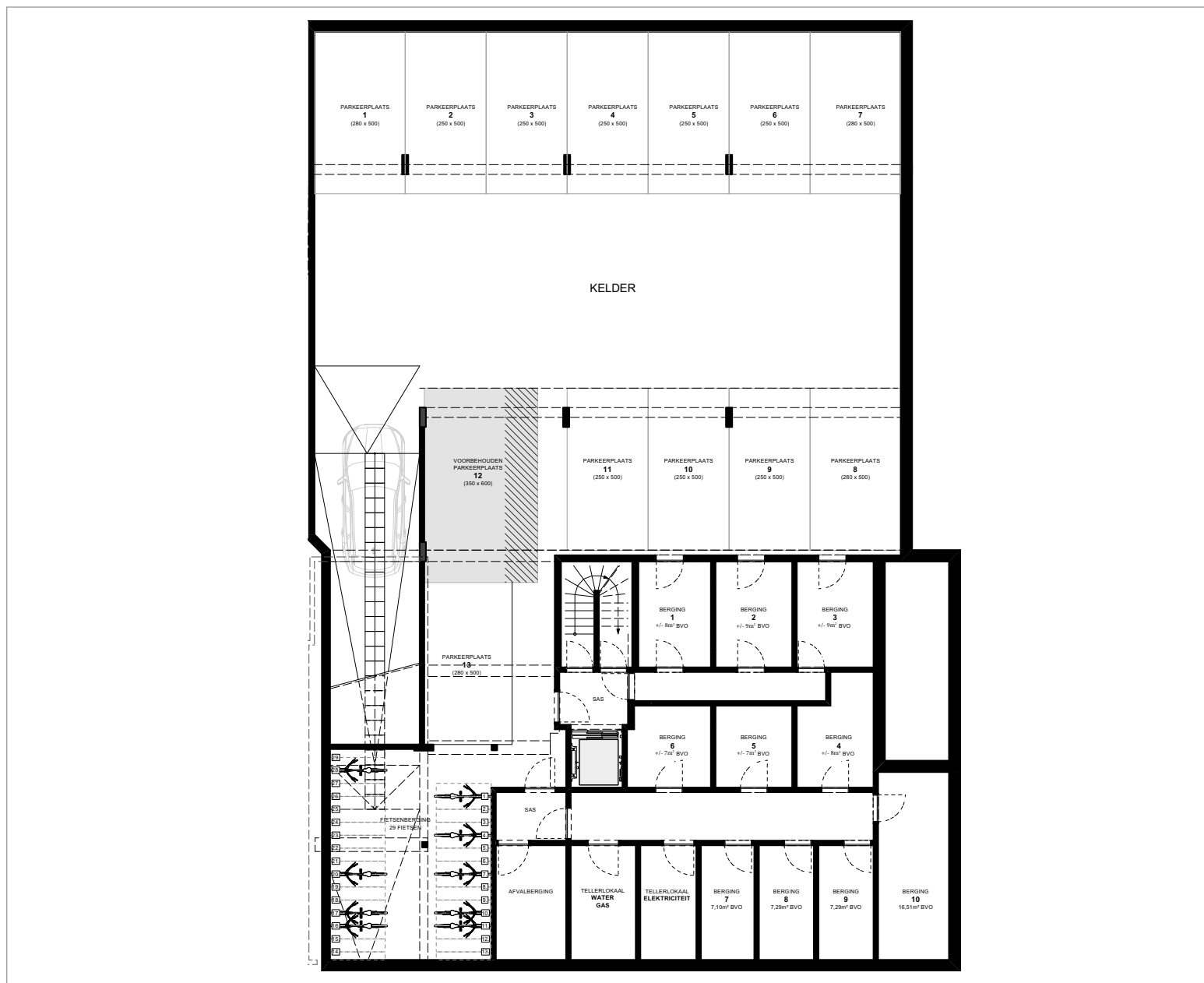


# DOORSNEDE

Schaal 1/100



# KELDER

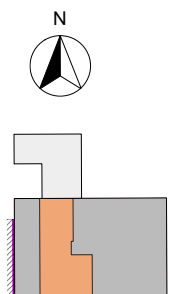


# GELIJKVLOERS APP. 0.1 EN 0.2



APP. 0.1: ± 68M<sup>2</sup>  
 APP. 0.2: ± 96M<sup>2</sup>

Schaal 1/100



**SLPK.: 1**  
**OPP.: ± 68M<sup>2</sup>**  
**OPP. TUIN: ± 42M<sup>2</sup>**  
**OPP. TERRAS: ± 13M<sup>2</sup>**  
 -  
 Schaal 1/100

