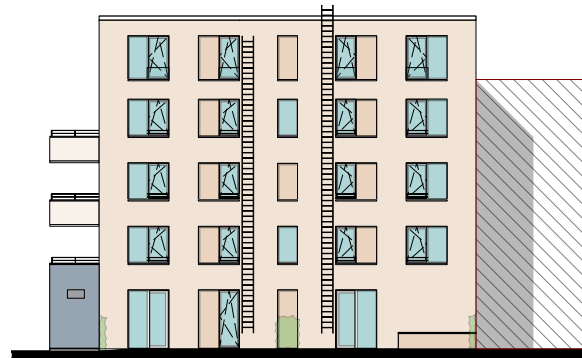


GEVELPLAN



VOORGEVEL



ACHTERGEVEL



RECHTERGEVEL

MATERIALEN:

Gevelsteen:

Zandkleur

Gevelsteen plint:

Blauw/ grijs

Buitenschrijnwerk:

Wit

Gevelplaat:

Wit

Dakrandprofielen:

Wit

Dorpels:

Natuursteen plint

Glazen balustrade:

Klaar glas

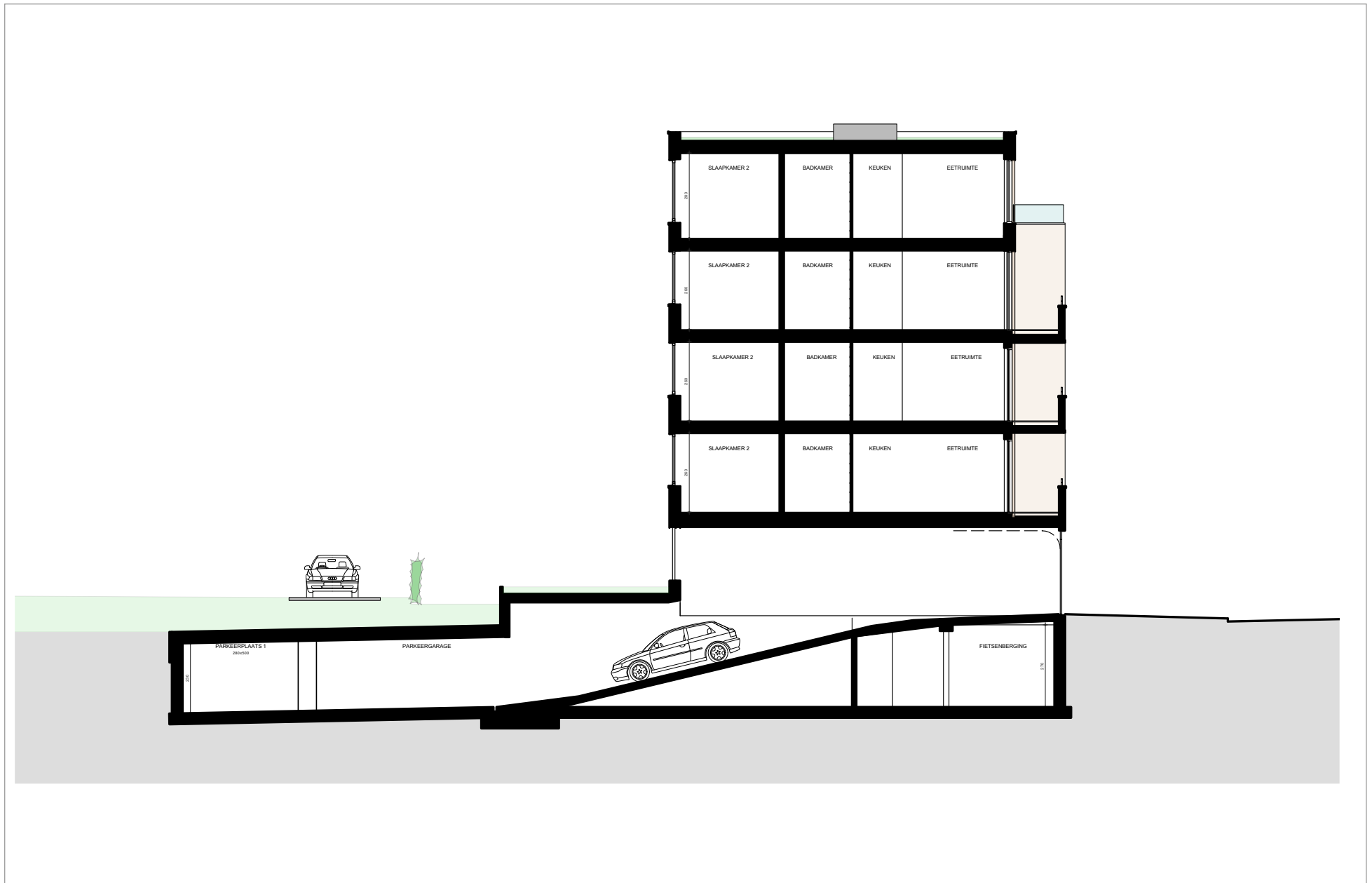
Poort:

Wit

Gevelbekleding:

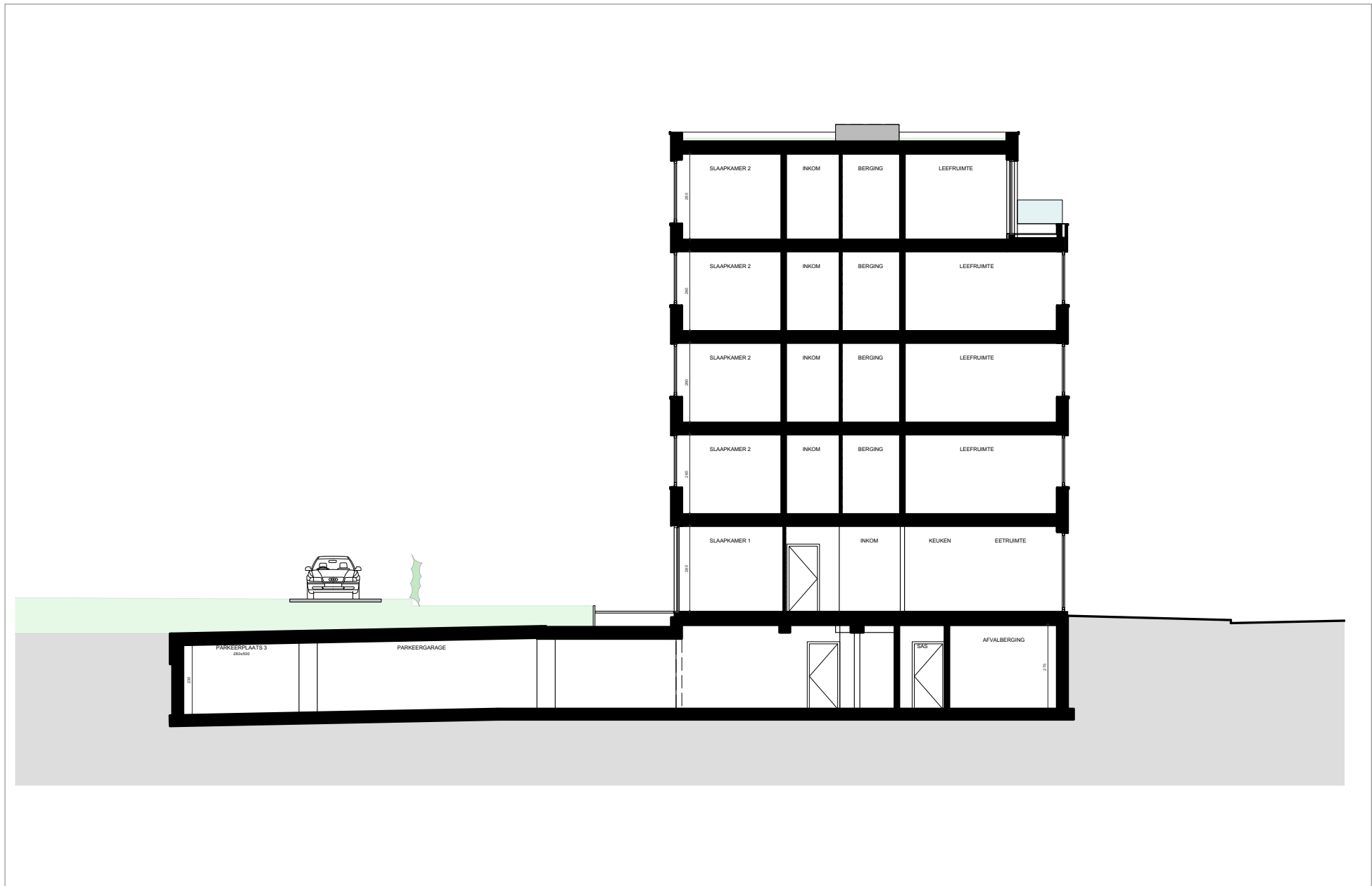
Hout

DOORSNEDE

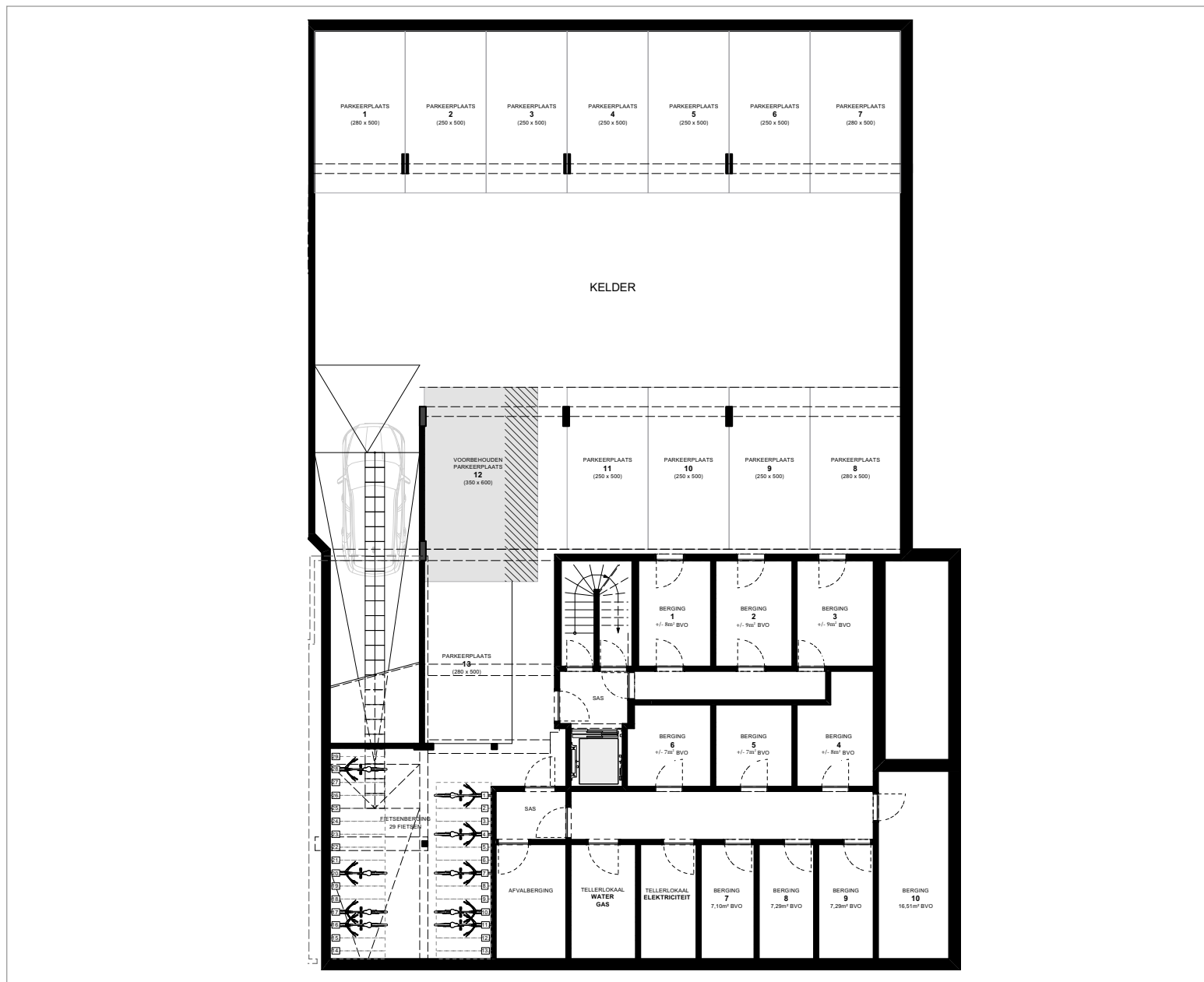


DOORSNEDE

Schaal 1/100



KELDER

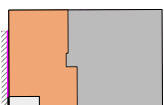


1^{STE} VERDIEPING APP. 1.1 EN 1.2



APP. 1.1: ± 102M²
 APP. 1.2: ± 100M²

Schaal 1/100



SLPK.: 2

OPP.: ± 102M²

OPP. TERRAS: ± 7M²

Schaal 1/100

