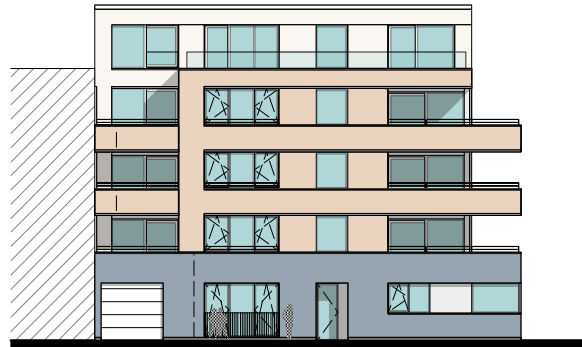
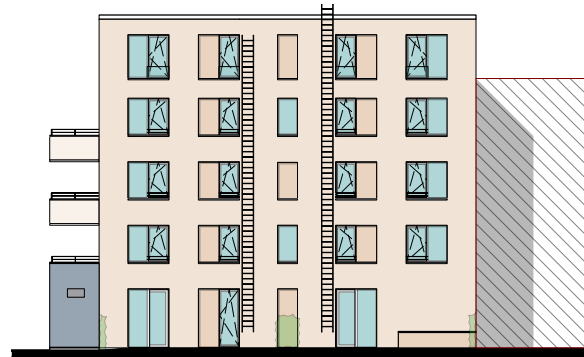


GEVELPLAN



VOORGEVEL



ACHTERGEVEL



RECHTERGEVEL

MATERIALEN:

Gevelsteen:

Zandkleur

Gevelsteen plint:

Blauw/ grijs

Buitenschrijnwerk:

Wit

Gevelplaat:

Wit

Dakrandprofielen:

Wit

Dorpels:

Natuursteen plint

Glazen balustrade:

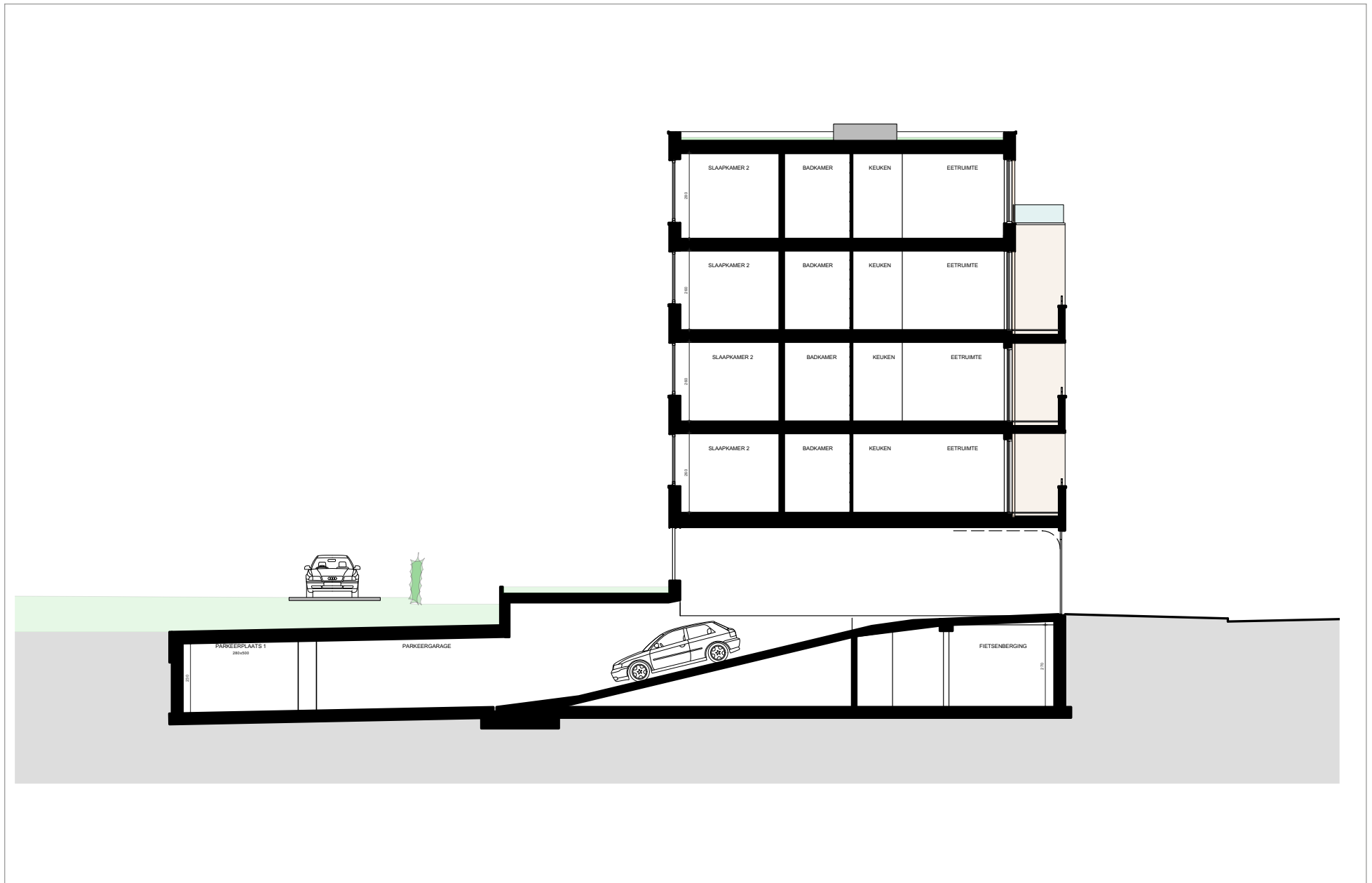
Klaar glas

Poort:

Wit

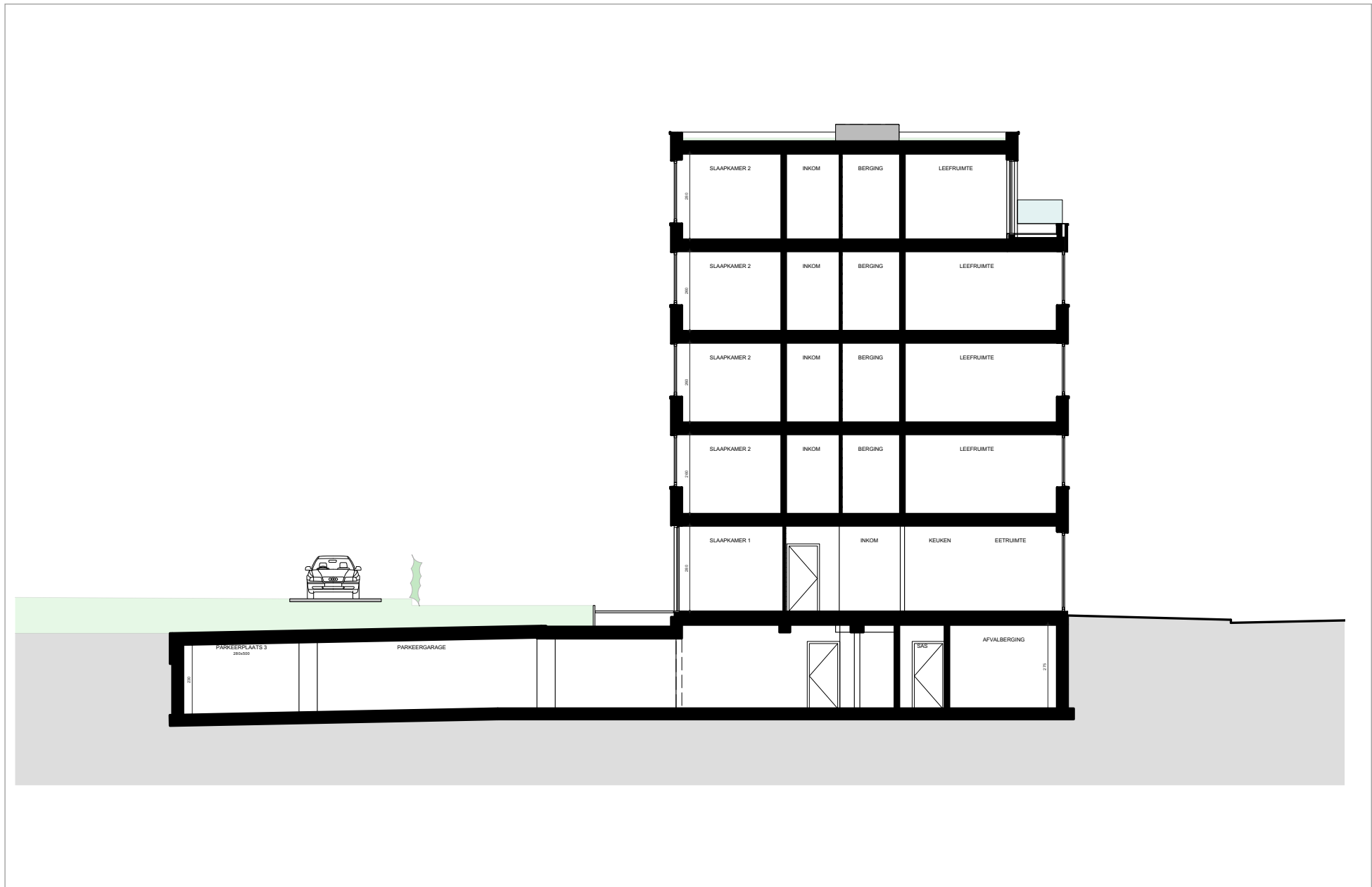
Gevelbekleding:

Hout

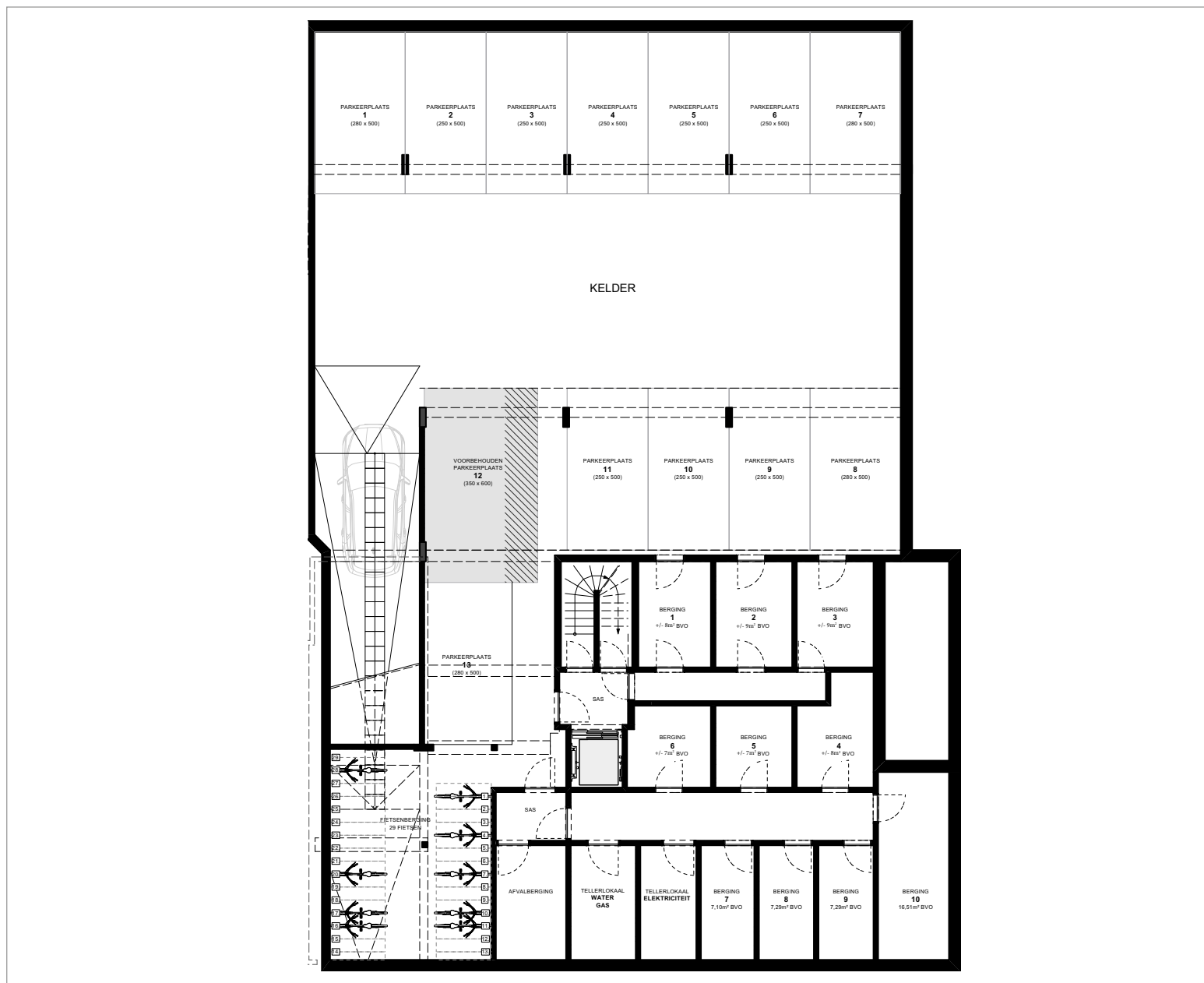


DOORSNEDE

Schaal 1/100



KELDER

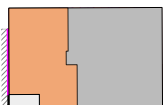


2^{DE} VERDIEPING APP. 2.1 EN 2.2



APP. 2.1: ± 102M²
APP. 2.2: ± 100M²

Schaal 1/100



SLPK.: 2
 OPP.: ± 102M²
 OPP. TERRAS: ± 7M²

Schaal 1/100

