

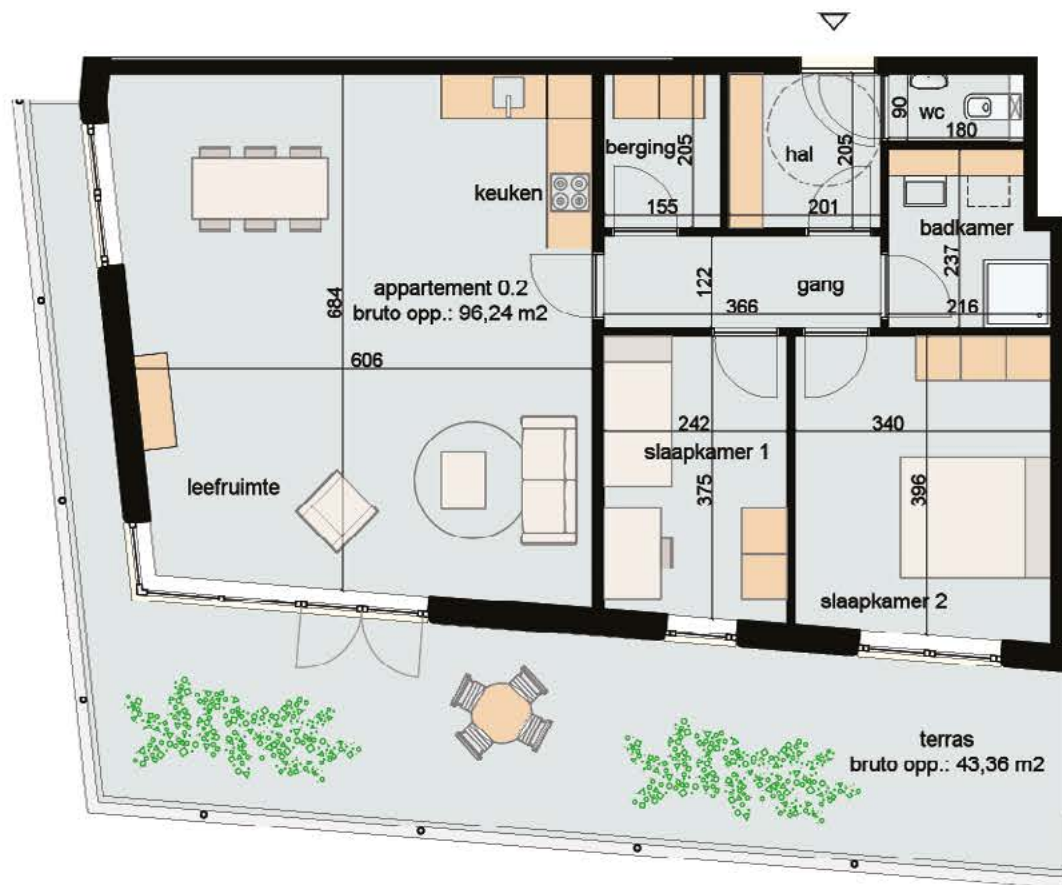
# GELIJKVLOERS APP. 0.1 TOT 0.4



APP. 0.1: ± 91M<sup>2</sup>  
 APP. 0.2: ± 96M<sup>2</sup>  
 APP. 0.3: ± 62M<sup>2</sup>  
 APP. 0.4: ± 115M<sup>2</sup>

Schaal 1/180

# APP. 0.2



SLPK.: 2  
OPP.: ± 96M<sup>2</sup>  
OPP. TERRAS: ± 43M<sup>2</sup>

Schaal 1/100