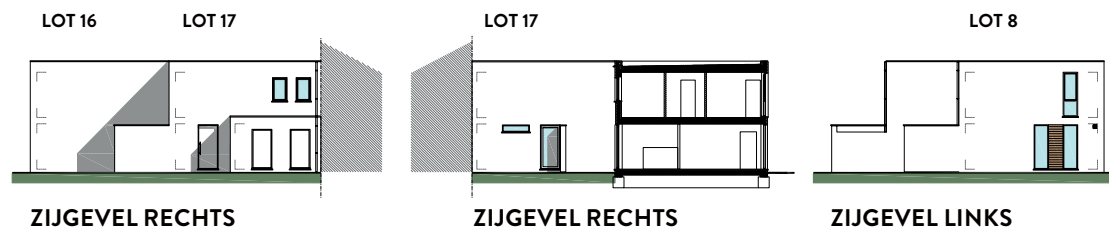
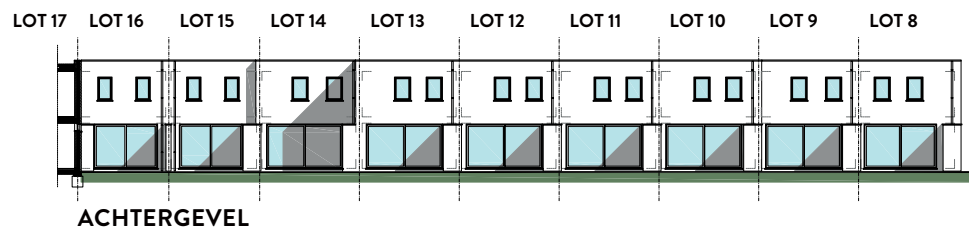
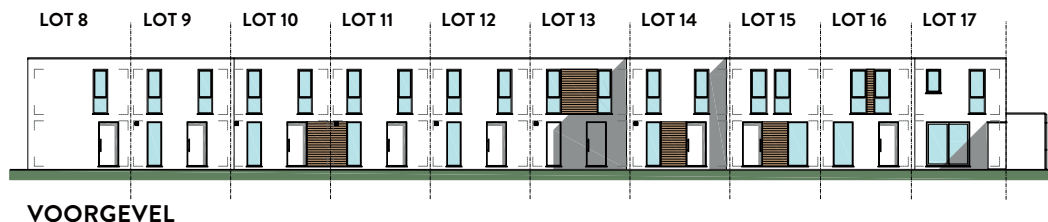


# LOT 8 TEM 17



## MATERIALEN:

### Gewelsteen:

Vandersanden Présence  
Sao Paolo WF

### Voegwerk:

Toon op toon: Seifert 99475

### Dakrandprofiel:

Aluminium gelakt  
RAL 9004 grafietzwart

### Schrijnwerk PVC:

PVC, Binnenzijde wit  
Buitenzijde gladde folie grafietzwart

### Gewelbekleding:

Hout, thermowood  
Horizontale profielen

### Regenwaterafvoer:

Vierkant, zink  
Beugels in zink

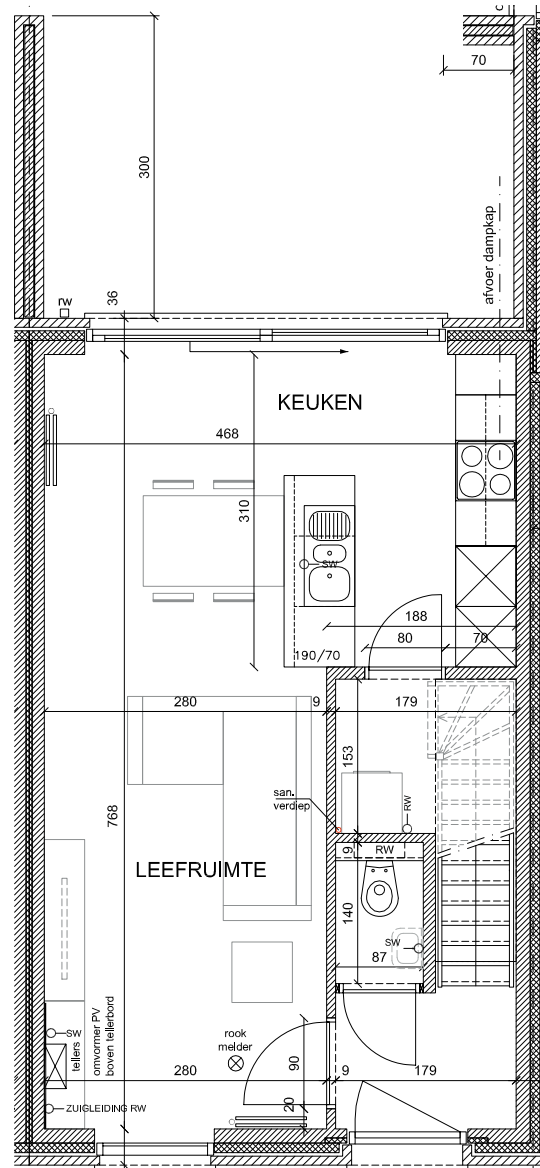
### Dorpels:

Blauw hardsteen

## OPP. LOTEN:

Lot 8: ±157,19 m <sup>2</sup>	Lot 13: ±84,40 m <sup>2</sup>
Lot 9: ±100,72 m <sup>2</sup>	Lot 14: ±99,84 m <sup>2</sup>
Lot 10: ±88,64 m <sup>2</sup>	Lot 15: ±88,48 m <sup>2</sup>
Lot 11: ±93,14 m <sup>2</sup>	Lot 16: ±75,22 m <sup>2</sup>
Lot 12: ±91,54 m <sup>2</sup>	Lot 17: ±77,30 m <sup>2</sup>

## GELIJKVLOERS OPP. 42,57 M<sup>2</sup>



## VERDIEPING OPP. 42,57 M<sup>2</sup>

